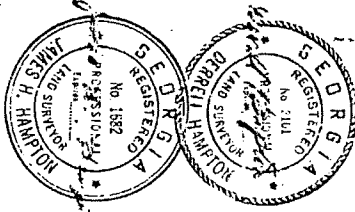
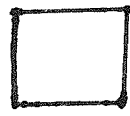
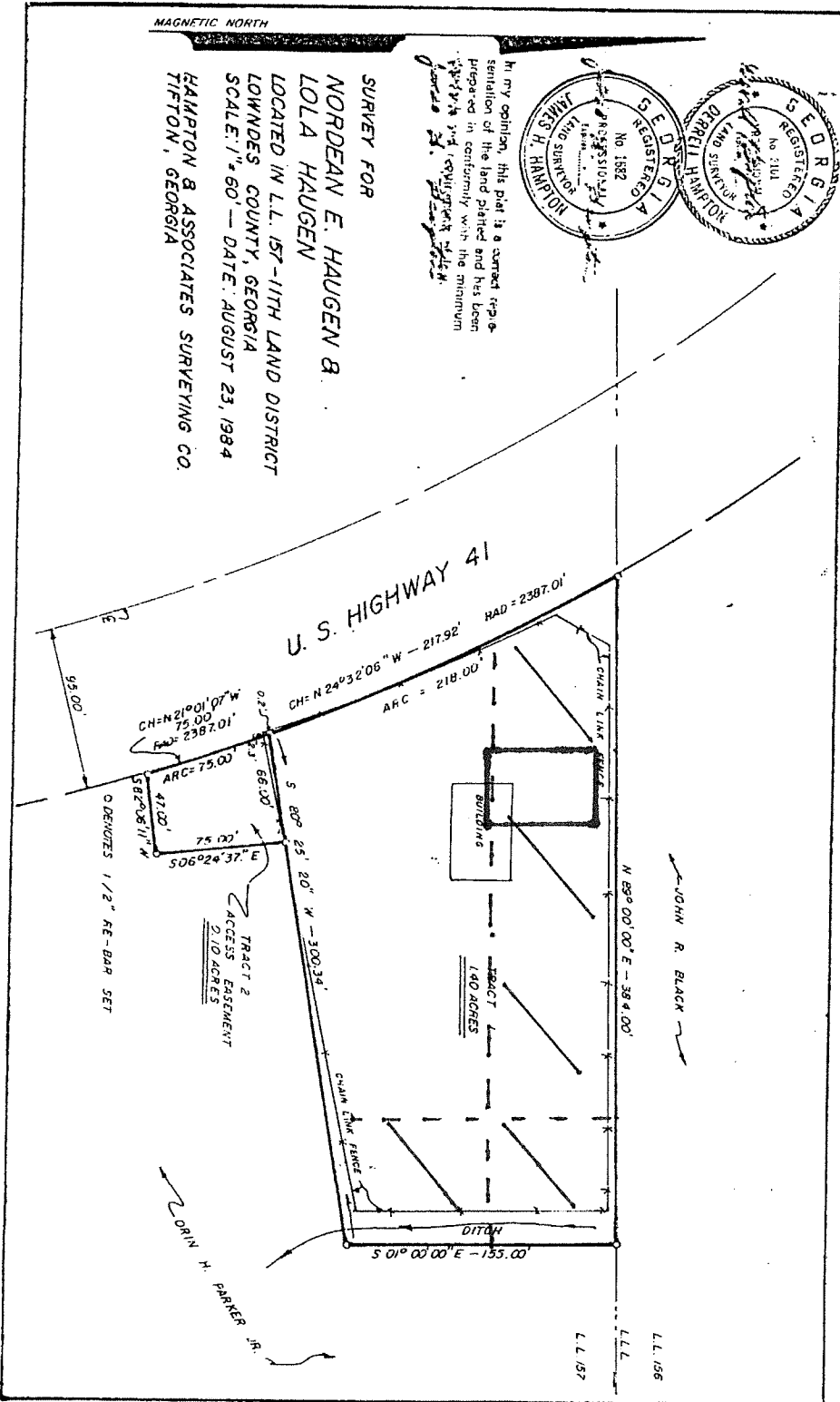


MAGNETIC NORTH

In my opinion, this plat is a correct representation of the land platted and has been prepared in conformity with the minimum requirements of the Georgia Code, Chapter 13, Article 1, Section 13-1-1.



SURVEY FOR  
NORDEAN E. HAUGEN &  
LOLA HAUGEN  
LOCATED IN L.L. 157-11TH LAND DISTRICT  
LOWMEDES COUNTY, GEORGIA  
SCALE: 1" = 60' — DATE: AUGUST 23, 1984  
HAMPTON & ASSOCIATES SURVEYING CO.  
TIFFON, GEORGIA



- SHOWS WHERE 60' BUFFER WOULD BE REQUIRED  
- BUILDING DRAWN TO SCALE