

**POWER NOTES:**

1. CONTRACTOR TO CONTACT CARTHIEL GUESS (CGUESS@SLASHPINEEMG.COM), 877-205-4736, PRIOR TO CONSTRUCTION.
2. SLASH PINE EMC TO INSTALL PRIMARY CONDUCTOR OVERHEAD FROM EXISTING UTILITY POLE TO PROPOSED UTILITY POLE AND UNDERGROUND FROM PROPOSED UTILITY POLE TO THE PROPOSED PAD-MOUNTED TRANSFORMER.
3. CONTRACTOR TO INSTALL CONDUIT FROM METER RACK TO PAD-MOUNTED TRANSFORMER. LOCATION OF PAD-MOUNTED TRANSFORMER TO BE COORDINATED WITH SLASH PINE EMC PRIOR TO CONSTRUCTION. SLASH PINE EMC TO PULL SECONDARY CONDUCTOR THROUGH CONTRACTOR INSTALLED CONDUIT
4. SLASH PINE EMC TO OBTAIN ANY ADDITIONAL EASEMENTS.
5. THERE WILL BE AN ESTIMATED FEE OF \$475 FOR UNDERGROUND SERVICE AND \$9 PLF FOR UNDERGROUND CONDUCTOR. (DUE TO MARKET FLUCTUATIONS, THIS ESTIMATE EXPIRES AFTER 90 DAYS. CONTRACTOR TO CONTACT CARTHIEL GUESS FOR AN UPDATED ESTIMATE.)

**KEY NOTES - ELECTRICAL EQUIPMENT**

1. EXISTING LIT FIBER HANDHOLE/PEDESTAL.
2. TRAFFIC RATED TELCO VAULT LABELED "VZV FIBER". (SEE NOTE 4.05 ON SHEET E1)
3. TRAFFIC RATED TELCO VAULT FOR "VZV FIBER" (SPACED EVERY 500' AT MAJOR TRANSITIONS AND AS NEEDED TO ALLOW DARK FIBER TO BE PULLED).
4. PROPOSED PAD-MOUNTED TRANSFORMER, FURNISHED AND INSTALLED BY SLASH PINE EMC
5. PROPOSED UTILITY POLE, FURNISHED AND INSTALLED BY SLASH PINE EMC
6. EXISTING UTILITY POLE.

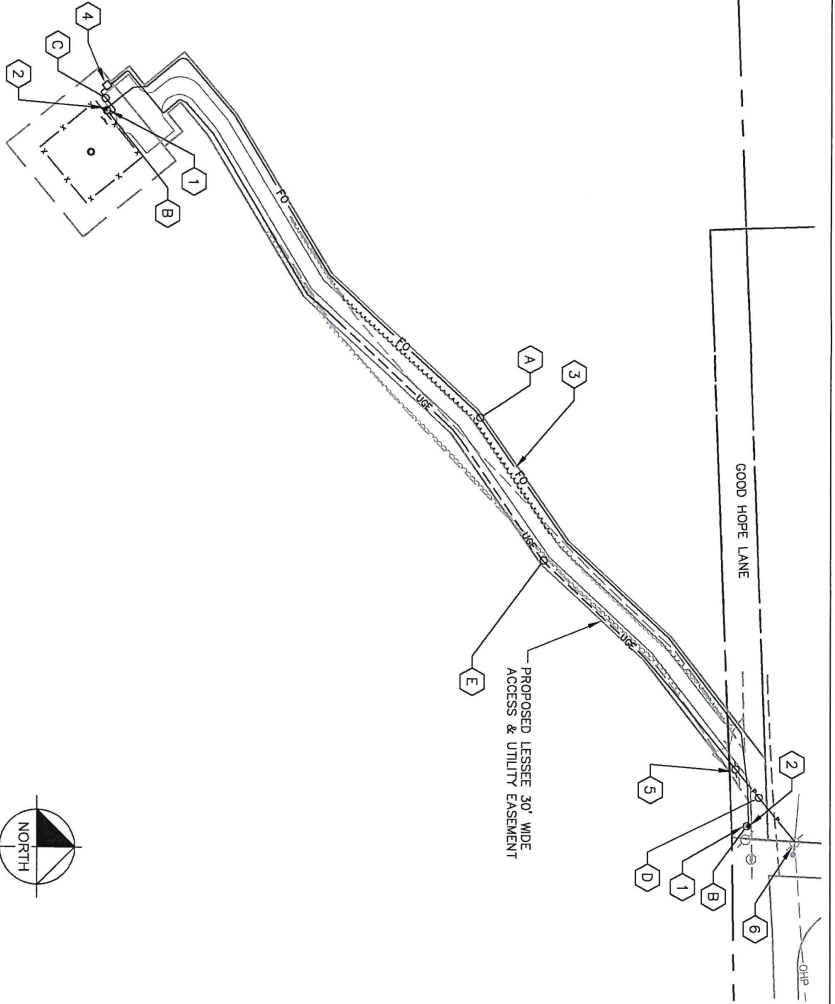
**KEY NOTES - CONDUIT, CONDUCTORS, & MISC.**

- A. TWO (2) 2" PVC CONDUIT FOR "VZV FIBER" WITH TWO (2) PULL BOXES. SEE THE CONFINED SPACE MANUALLY 888.5 HIGH GENERAL CONTRACTOR SPECIFICATIONS FOR UTILITY AND GENERAL CONTRACTOR AND HANDHOLE AT RIGHT OF WAY WITH VERIZON CONSTRUCTION MANAGER.
- B. 4" PVC BRIDGE FIBER CONDUIT. (IF NO EXISTING LIT FIBER HANDHOLE/PEDESTAL IS PRESENT CONTRACTOR TO PROVIDER A 5' LONG CAPPED STUB BRIDGE CONDUIT)
- C. CONTRACTOR TO FURNISH AND INSTALL CONDUIT FROM METER RACK TO PAD-MOUNTED TRANSFORMER. SLASH PINE EMC TO PULL SECONDARY CONDUCTOR THROUGH CONTRACTOR INSTALLED CONDUIT FROM METER RACK TO PAD-MOUNTED TRANSFORMER. (2) 2" PVC CONDUITS WITH PULL ROPE(S) AND 90 DEGREE RIGID METALLIC SLEEVES, FURNISHED AND INSTALLED BY SLASH PINE EMC.
- D. SLASH PINE EMC TO FURNISH AND INSTALL PRIMARY CONDUCTOR OVERHEAD FROM EXISTING UTILITY POLE TO PROPOSED UTILITY POLE.
- E. SLASH PINE EMC TO FURNISH AND INSTALL PRIMARY CONDUCTOR UNDERGROUND FROM PROPOSED UTILITY POLE TO PROPOSED PAD-MOUNTED TRANSFORMER.

**NOTES:**

GENERAL CONTRACTOR IS TO CONFIRM WITH VERIZON CONSTRUCTION MANAGER WHETHER INSTALLATION OF THE TWO (2) 2" CONDUITS WILL BE PART OF THE INITIAL CONSTRUCTION.  
 PROPOSED VERIZON TELCO VAULT WITHIN RIGHT OF WAY LOCATED APPROXIMATELY 30 58' 38.61"N, 83 04' 02.28"W BASED ON GOOGLE EARTH IMAGERY.

1 OVERALL UTILITY SERVICE ROUTING PLAN  
 E3 SCALE: 1" = 100'



**PROJECT INFORMATION:**

SITE NAME: OLD STATE ROAD  
 SITE NO.: 502891  
 FUZE PROJECT#: 15525785  
 GOOD HOPE CIRCLE  
 NANTON, GA 31644  
 LAMNES COUNTY

**PLANS PREPARED BY:**

**Kimley-Horn**

11720 AMBER PARK DRIVE, SUITE 600  
 ALPHARETTA, GA 30029  
 WWW.KHGF.COM

**REV. DATE. ISSUED FOR. BY.**

7		
6		
5		
4		
3		
2		
1	05/16/20	CONSTRUCTION CCH
0	06/12/20	PRELIMINARY CCH

**LICENSER:**

Professional Engineer  
 No. PE00871  
 CORBIN C. HIRBY  
 6/21/20

**KHA PROJECT NUMBER:**

013509094

**DRAWN BY: CHECKED BY:**

TDM WCE

**SHEET TITLE:**

OVERALL UTILITY ROUTING PLAN

**SHEET NUMBER:**

E3