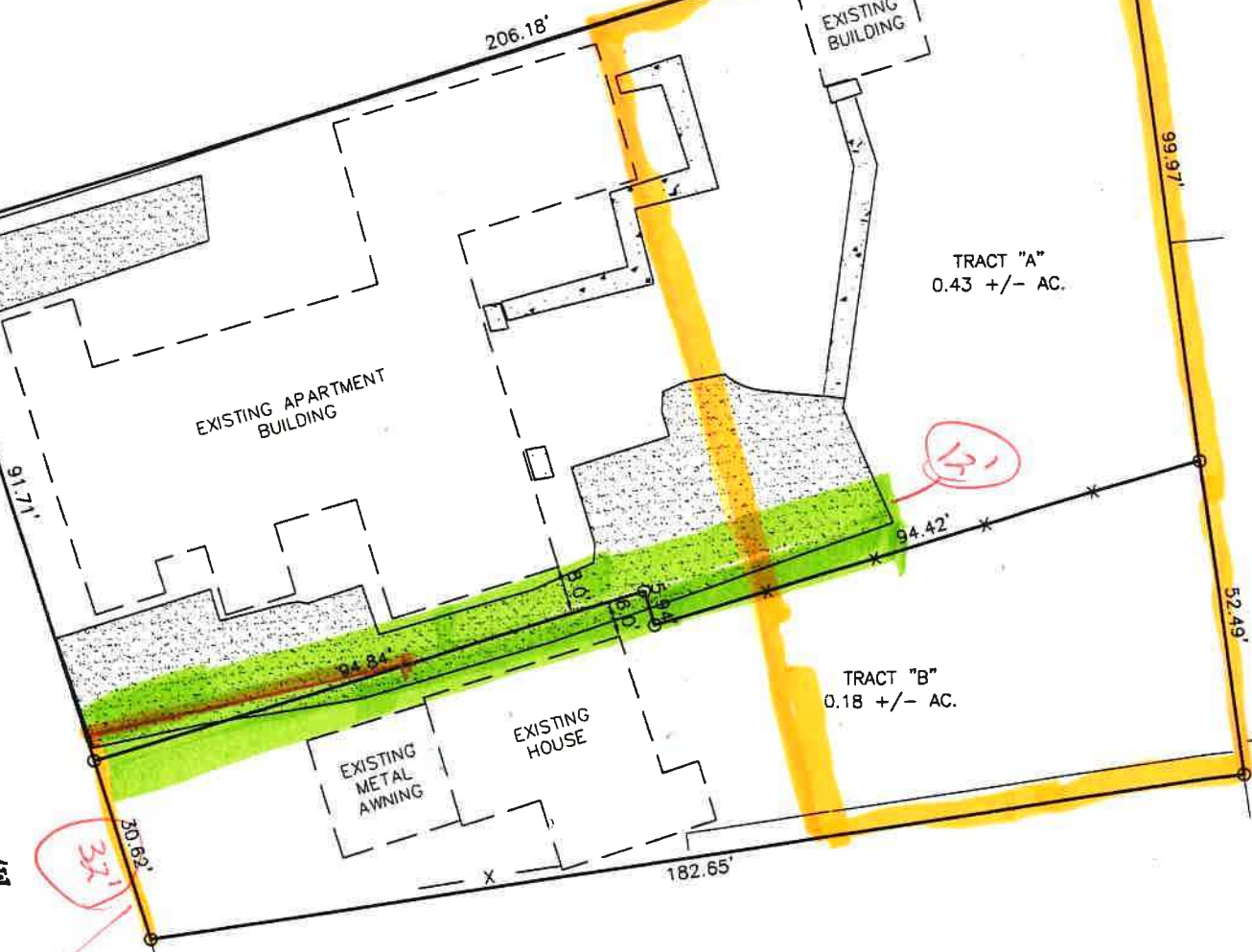


N/F  
LEMAKA HOLDINGS, LLC.  
PROPERTY  
D.B. 7024 PG. 720  
P.B. 8 PG. 257

*Rezone from  
R-10 → R-P*

P.O.B. "  
2" I.P.F.

N. CHURCH STREET 50' R/W



*Revised  
property lines*

N/F  
JORDAN PROPERTY GROUP LLC.  
PROPERTY  
D.B. 2259 PG. 295