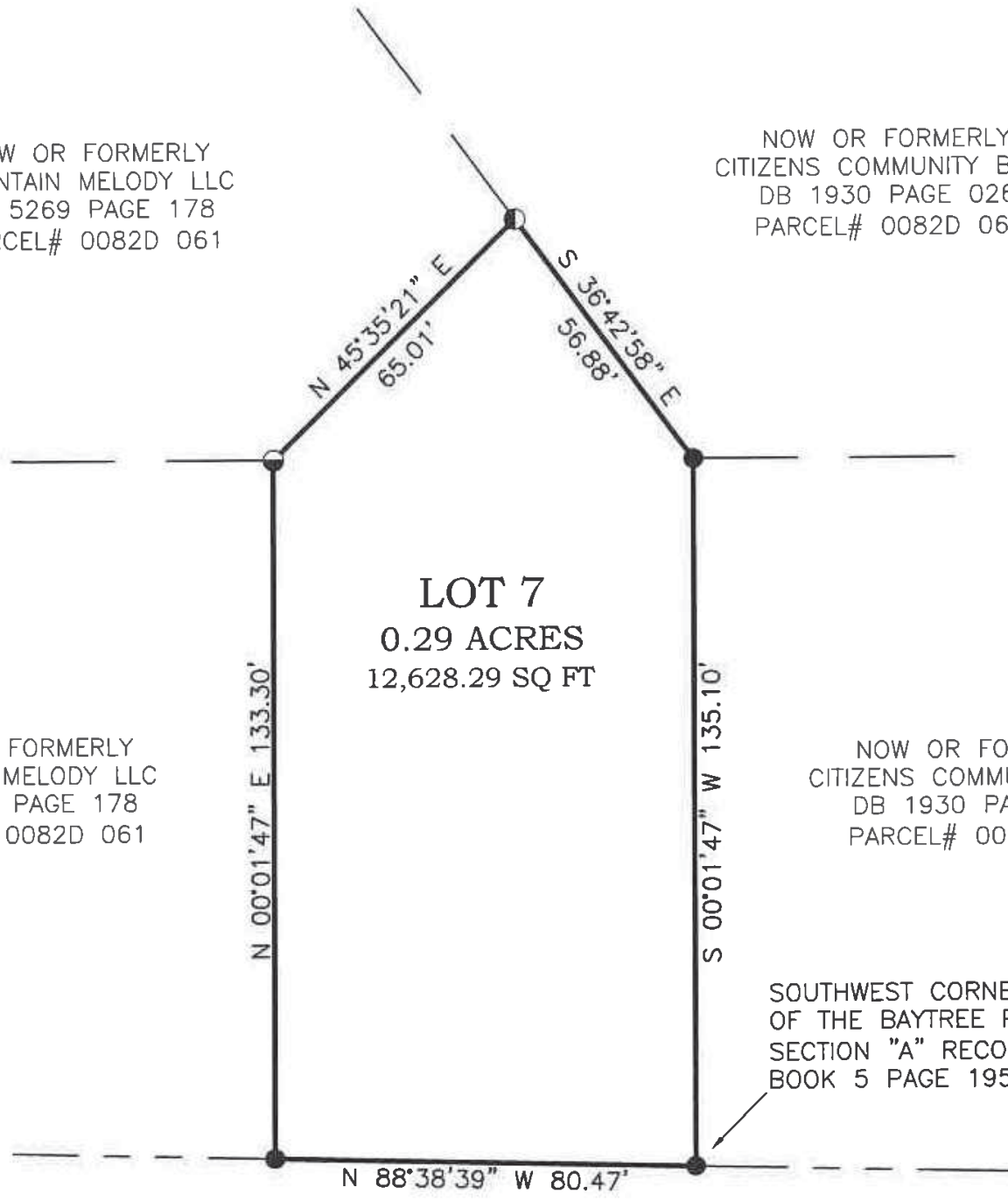


NOW OR FORMERLY
MOUNTAIN MELODY LLC
DB 5269 PAGE 178
PARCEL# 0082D 061

NOW OR FORMERLY
CITIZENS COMMUNITY BANK
DB 1930 PAGE 026
PARCEL# 0082D 061



NOW OR FORMERLY
MOUNTAIN MELODY LLC
DB 5269 PAGE 178
PARCEL# 0082D 061

NOW OR FORMERLY
CITIZENS COMMUNITY BANK
DB 1930 PAGE 026
PARCEL# 0082D 061

SOUTHWEST CORNER OF TRACT 6
OF THE BAYTREE PARK SD
SECTION "A" RECORDED IN PLAT
BOOK 5 PAGE 195

BAYTREE ROAD (68' R/W)

LEGEND

- 5/8" REBAR PL
- ⊙ 5/8" REBAR FO
- ⊙ 1" OPEN TOP P
- DB DEED BOOK
- PG PAGE