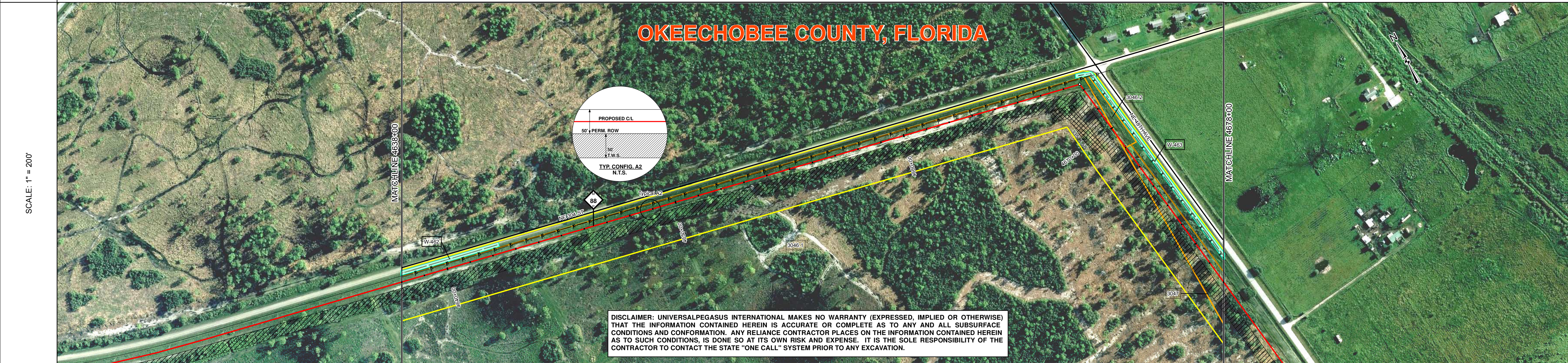
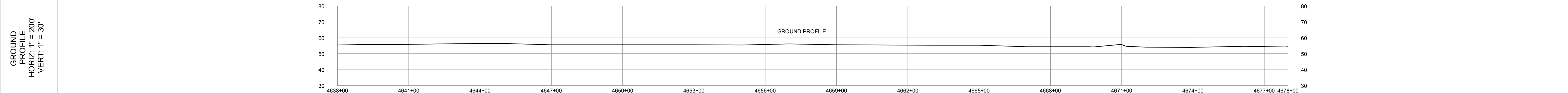


TRACT	MATCHLINE 4638+00	3046.1 CASTAWAY RANCH, LLC 3225 FT 4638+00 TO 4670+25	3046.2 BURNHAM FARMS INC. 75 FT 4670+25 TO 4671+00	3047 CASTAWAY RANCH, LLC 700 FT 4671+00 TO 4678+00	MATCHLINE 4678+00
-------	-------------------	--	---	---	-------------------



SURVEY DATA		STATIONING	
MATERIAL		MATCHLINE 4638+00	MATCHLINE 4678+00
4638+97 OVERHEAD POWER LT 21'		4640+00 POWER POLE LT 21'	4640+98 OVERHEAD POWER LT 21'
4642+33 POWER POLE LT 21'		4642+98 OVERHEAD POWER LT 21'	4644+64 POWER POLE LT 22'
4644+98 OVERHEAD POWER LT 24'		4644+98 OVERHEAD POWER LT 24'	4646+77 POWER POLE LT 21'
4648+77 POWER POLE LT 21'		4648+98 OVERHEAD POWER LT 23'	4648+98 OVERHEAD POWER LT 23'
4649+23 POWER POLE LT 21'		4649+23 POWER POLE LT 21'	4653+00 OVERHEAD POWER LT 22'
4653+00 OVERHEAD POWER LT 22'		4653+67 POWER POLE LT 20'	4653+67 POWER POLE LT 20'
4655+02 OVERHEAD POWER LT 22'		4655+02 OVERHEAD POWER LT 22'	4656+25 POWER POLE LT 21'
4656+25 POWER POLE LT 21'		4656+98 OVERHEAD POWER LT 21'	4656+98 OVERHEAD POWER LT 21'
4657+98 POWER POLE LT 21'		4657+98 POWER POLE LT 21'	4659+48 OVERHEAD POWER LT 21'
4659+48 OVERHEAD POWER LT 21'		4659+48 OVERHEAD POWER LT 21'	4660+98 OVERHEAD POWER LT 20'
4660+98 OVERHEAD POWER LT 20'		4662+23 POWER POLE LT 20'	4662+23 POWER POLE LT 20'
4663+00 OVERHEAD POWER LT 21'		4663+00 OVERHEAD POWER LT 21'	4664+48 POWER POLE LT 22'
4664+48 POWER POLE LT 22'		4664+97 OVERHEAD POWER LT 22'	4664+97 OVERHEAD POWER LT 22'
4666+77 POWER POLE LT 21'		4666+77 POWER POLE LT 21'	4667+72 POWER POLE LT 21'
4667+72 POWER POLE LT 21'		4667+72 POWER POLE LT 21'	4667+72 POWER POLE LT 21'
4667+72 POWER POLE LT 21'		4667+72 POWER POLE LT 21'	4670+98 MONUMENT RT 9'

ENGINEERING DATA	
REFERENCE DRAWING	
CLASS LOCATION	
MINIMUM DEPTH OF COVER	
AC MITIGATION / CATHODIC PROTECTION	

ENVIRONMENTAL DATA	
WATERBODY/WETLAND CROSSINGS	
WATERBODY/WETLAND LENGTH	
STATIONS	
PERMANENT EROSION CONTROL	
THREATENED AND ENDANGERED SPECIES	
SPECIAL CONDITIONS	

BILL OF MATERIALS			
ITEM NO.	QTY	UOM	DESCRIPTION
Z	2976	FT	30" O.D. x 0.429" W.T., API 5L, X70, PSL2, DSAW, 14-16 MILS FBE
11	1024	FT	30" O.D. x 0.514" W.T., API 5L, X70, PSL2, DSAW, 14-16 MILS FBE

MISCELLANEOUS MATERIALS			
QTY	UOM	REQ'D NUMBER	DESCRIPTION
0	EA		SET ON WEIGHTS
3	EA		PIPELINE MARKERS
0	EA		WARNING SIGNS
1	EA		CP TEST STATION TYPE 1
0	EA		CP TEST STATION TYPE 2
0	EA		AERIAL MARKERS
0	EA		ANODE BED DEEP WELL

TYPICAL DRAWINGS	
DWG/FIELD BOOK NO.	TITLE
21040-510-TYP-20001	CATHODIC PROTECTION STD. SINGLE POINT TEST STATION, TYPE 1
21040-510-TYP-20002	CATHODIC PROTECTION STD. FOREIGN PIPELINE CROSSING TEST STATION, TYPE 2
21040-510-TYP-20112	CONTINUOUS CONCRETE COATING STANDARD FOR 36" / 30" PIPELINE
21040-510-TYP-20113	TYPICAL SADDLE BAG WEIGHTS
21040-510-TYP-20114	WARNING SIGN DETAIL
21040-510-TYP-20115	AERIAL MARKER INSTALLATION DETAIL
21040-510-TYP-20116	AERIAL MARKER DETAIL
21040-510-TYP-20117	TYPICAL PIPELINE MARKER ASSEMBLY
21040-510-TYP-20118	PIPELINE MARKER "WARNING" DECAL

GENERAL INFORMATION	
1.	THE MINIMUM DEPTH OF COVER FOR THE PROJECT IS 36 INCHES. ADDITIONAL DEPTH OF COVER IS REQUIRED FOR ROAD AND WATERBODY CROSSINGS, AND IS TO BE IN ACCORDANCE WITH REFERENCED PERMIT DRAWINGS, SITE SPECIFIC DRAWINGS, OR CONSTRUCTION SPECIFICATIONS, WHICHEVER IS MORE STRINGENT.
2.	THE BOUNDARIES OF ALL WORK AREAS WILL BE CLEARLY MARKED AND ALL WORK SHALL REMAIN WITHIN THE DESIGNATED WORK AREA.
3.	THE REQUIRED STATE ONE CALL NOTIFICATION IS THE RESPONSIBILITY OF THE CONSTRUCTION CONTRACTOR.
4.	THE CONTRACTOR SHALL ACCESS THE WORK AREA USING ONLY PUBLIC ROADS AND APPROVED ACCESS ROADS.
5.	ADDITIONAL WARNING SIGNS MAY BE REQUIRED AS DICTATED BY CONSTRUCTION CONTRACT.
6.	MAP PROJECTION: NAD 1983 HARN STATE PLANE FLORIDA EAST FIPS 9501 FEET. VERTICAL DATUM: NAVD 88.

LEGEND	
HDD PIPE	PIPELINE ROUTE
BORE PIPE	X - FENCE
LINE PIPE	P - POWER LINE
SR RAD PIT	T - TELEPHONE LINE
INDUCTION BEND	W - WATERLINE
TRANSITION PIPE	S - SEWER LINE
CONT. CONC. COAT.	C - BURIED CABLE
SETON WEIGHTS	U - UTILITY LINE
WARNING SIGN	GENERAL SURVEY
MATERIAL ITEM	FOREIGN PIPELINE
AERIAL STATION	RAILROAD
CP TEST STATION	HIGHWAY / ROAD
BY MOV. BY A CV	PRIVATE ACCESS / SHOOPY ROAD
PIPELINE MARKER	COUNTY BOUNDARY
ANODE BED DEEP WELL	ROW PARCEL
	PLSS SECTION LINE
	TRAP
	WATER WELL
	HDD ENTRY / EXT

REVISIONS					
NO.	DESCRIPTION	DATE	REV BY	CHK BY	APP BY
1	IFC (UPDATE ENV. RE-ROUTES, FOOT-PRINT)	2016-04-08	MB	MJ	RG
0	ISSUED FOR CONSTRUCTION	2015-12-15	MB	MJ	RG