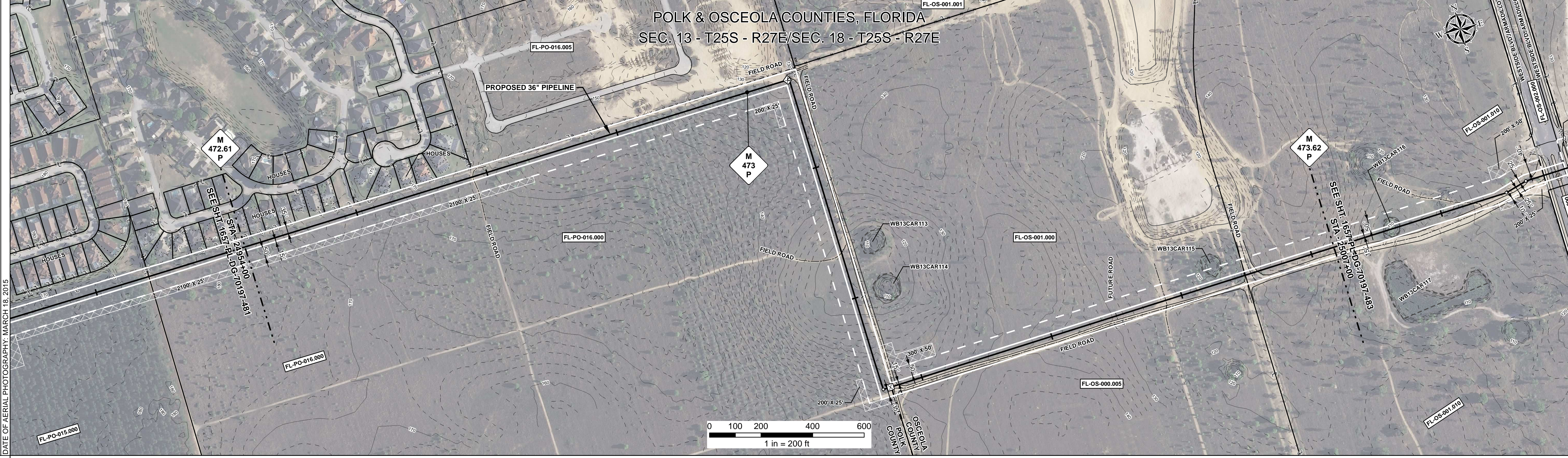


RIGHT - OF - WAY	TRACT NUMBERS		24954+00		24970+46		24989+00		25007+00			
RODDAGE	212.1		87.2		21.9							
SURVEY DATA	SURVEY COMPANY: FIELD BOOK: PAGES:											
CLASS LOCATION	CLASS 3		24970+46		CLASS 1							
MINIMUM DEPTH OF COVER	3'		5'		3'		5'		3'		5'	
PIPE MATERIAL	SR		SR		SR		SR		SR		SR	
	- 3R, FITTING		- 3R, FITTING		- 3R, FITTING		- 3R, FITTING		- 3R, FITTING		- 3R, FITTING	
	- SET ON WEIGHT, GPW, GEOTEXTILE PIPE WEIGHT		- SET ON WEIGHT, GPW, GEOTEXTILE PIPE WEIGHT		- SET ON WEIGHT, GPW, GEOTEXTILE PIPE WEIGHT		- SET ON WEIGHT, GPW, GEOTEXTILE PIPE WEIGHT		- SET ON WEIGHT, GPW, GEOTEXTILE PIPE WEIGHT		- SET ON WEIGHT, GPW, GEOTEXTILE PIPE WEIGHT	

ALIGNMENT DETAIL

- PROPOSED PIPELINE
- PROPOSED PERMANENT EASEMENT
- TEMP WORKSPACE
- ADD. TEMP. WORKSPACE
- EASEMENT LINE
- CL STREAM/CREEK/DITCH
- EDGE OF WATER
- CL LEVEE
- FIELD DELINEATED WETLAND
- STREAM/DRAIN/WATERBODY BNDRY
- CL ROAD
- EDGE OF ROAD/PAVEMENT/CURB
- CL CULVERT
- CL RAILROAD
- ACCESS ROAD (PAR/TAR)
- STRUCTURE
- CONTOUR MAJOR (EVERY 10')
- CONTOUR MINOR (EVERY 2')
- PIPELINE MILEPOST
- PIPELINE MILEPOST 10TH
- PROPERTY LINE
- UNDERGROUND WATERLINE
- UNDERGROUND COM. CABLE
- UNDERGROUND POWERLINE
- UNDERGROUND SANITARY SEWER
- OVERHEAD POWERLINE
- OVERHEAD TELEPHONE
- VERIFIED PIPELINE
- FENCE
- TOP / TOE

DATE OF AERIAL PHOTOGRAPHY: MARCH 18, 2015



REFERENCE DRAWING

1657-PL-DG-32496

ENVIRONMENTAL SURVEY DATA

SENSITIVE AREAS

6a, 6b, 7, 8, 15, 16, 18

PROFILE

SCALE:
 HORIZONTAL: 1" = 200'
 VERTICAL: 1" = 200'

THE LOCATION OF TRENCH PLUGS AND SLOPE BREAKERS ARE INTENDED TO BE USED AS A GUIDELINE ONLY. EXACT LOCATION TO BE DETERMINED IN THE FIELD AS DIRECTED BY THE CHIEF INSPECTOR.

SLOPE BREAKERS/ARROW INDICATES DIRECTION

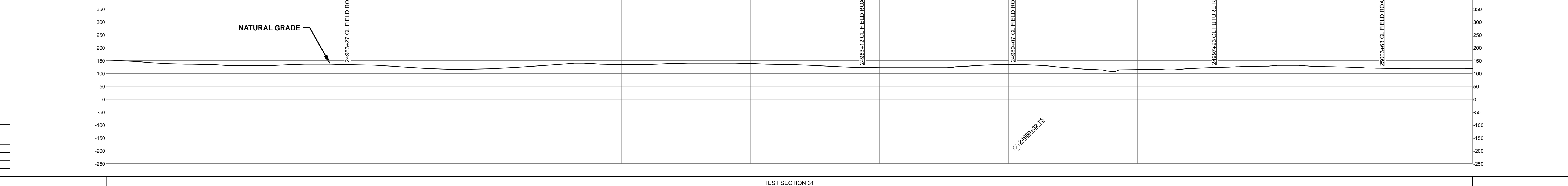
TRENCH PLUG

CP TEST STATION

RECTIFIER

DECOUPLER

SLOPE BREAKER & TRENCH PLUG SPACING		
CODE	% SLOPE	SPACING
A	< 5%	NO STRUCTURE
B	5 - 15%	300 FT
C	15 - 30%	200 FT
D	> 30%	100 FT



HYDROSTATIC TEST SECTION

DWG. NO.	DESCRIPTION	REV	DRN	DATE	DESCRIPTION	ITEM NO.	DESCRIPTION	QTY
		0		06/29/2015	ISSUED FOR BID	3	36" O.D. x 0.750" W.T., API 5L X70, FBE 16 MILS w/I.D. EPOXY 1.7 MILS	5300 LF
		1		03/14/2016	ISSUED FOR CONSTRUCTION	3R	3R ELBOW, HIGH STRENGTH WROUGHT BUTT-WELDED FITTING, 36" O.D.	2 EA

REVISIONS

MATERIALS

DESCRIPTION	ITEM NO.	DESCRIPTION	QTY
ISSUED FOR BID	3	36" O.D. x 0.750" W.T., API 5L X70, FBE 16 MILS w/I.D. EPOXY 1.7 MILS	5300 LF
ISSUED FOR CONSTRUCTION	3R	3R ELBOW, HIGH STRENGTH WROUGHT BUTT-WELDED FITTING, 36" O.D.	2 EA

ENGINEERING APPROVALS

TITLE		SIGNATURE		DATE	
BID	CONSTRUCTION				
DRAWN BY: GIE	FSR	06/29/2015	FSR	03/14/2016	
CHECKED BY: GIE	DRS	06/29/2015	JC	03/14/2016	
CHK. DATE:					

SABAL TRAIL PROJECT
PROPOSED 36" PIPELINE
 STA. 24954+00 TO STA. 25007+00
 ALIGNMENT SHEET

LOC. POLK & OSCEOLA COUNTIES, FLORIDA

YEAR: 2017 **SHEET:** 482 OF 492 **SCALE:** 1" = 200' **DWG.** 1657-PL-DG-70197-482 **REV.** 1

Document Path: H:\GIS\1657\Deliverables\Alignment\Sheets\1657-PL-DG-70197-482.mxd