

RIGHT - OF - WAY	CROSSING	
------------------	----------	--

SURVEY DATA	SURVEY COMPANY: FIELD BOOK: PAGES:
-------------	------------------------------------------

CLASS LOCATION	CLASS 1
MINIMUM DEPTH OF COVER	CLASS 1 24867+16 CLASS 3 3' 5' 3' 5' 3' 5' 1293'

PIPE MATERIAL

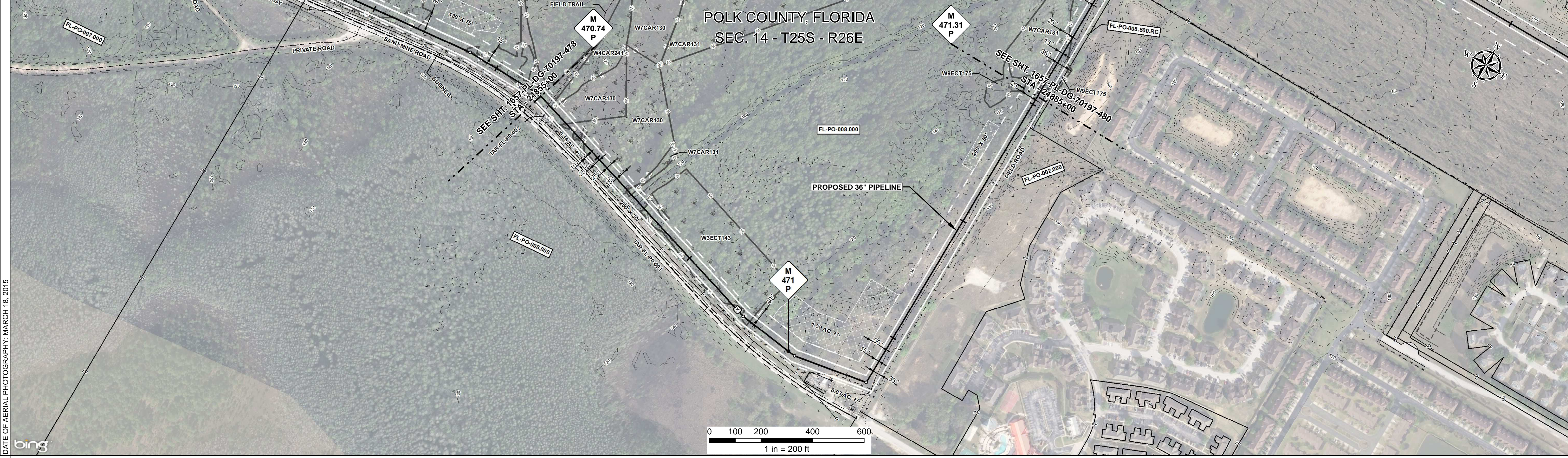
3R, FITTING

SET ON WEIGHT, GPW, GEOTEXTILE PIPE WEIGHT

ALIGNMENT DETAIL

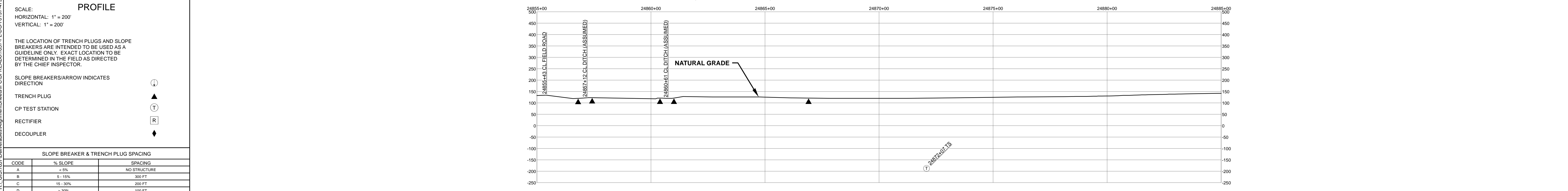
PROPOSED PIPELINE
PROPOSED PERMANENT EASEMENT
TEMP WORKSPACE
ADD. TEMP. WORKSPACE
EASEMENT LINE
CL STREAM/CREEK/DITCH
EDGE OF WATER
CL LEVEE
FIELD DELINEATED WETLAND
STREAM/DRAIN/WATERBODY BNDRY
CL ROAD
EDGE OF ROAD/PAVEMENT/CURB
CL CULVERT
CL RAILROAD
ACCESS ROAD (PAR/TAR)
STRUCTURE
CONTOUR MAJOR (EVERY 10')
CONTOUR MINOR (EVERY 2')
PIPELINE MILEPOST
PIPELINE MILEPOST 10TH
PROPERTY LINE
UNDERGROUND WATERLINE
UNDERGROUND COM. CABLE
UNDERGROUND POWERLINE
UNDERGROUND SANITARY SEWER
OVERHEAD POWERLINE
OVERHEAD TELEPHONE
VERIFIED PIPELINE
FENCE
TOP / TOE

TRANS. TOWER WELL GUY ANCHOR SEPTIC HDD ENTRY/EXIT VALVE FIRE HYDRANT METER UTILITY POLE SPREAD BREAK AERIAL MARKER ELEC. WATER, SAN. SEWER, GAS TELE. & STORM DRAIN MANHOLES



REFERENCE DRAWING	ENVIRONMENTAL SURVEY DATA
-------------------	---------------------------

SENSITIVE AREAS	W4CAR241 W7CAR130 W7CAR130 W7CAR130 W7CAR131 W3ECT143 W3ECT143 W3ECT143 W7CAR130 PFO PEM W7CAR130 PFO PEM W7CAR130 PFO PEM W7CAR130 PFO PEM W7CAR131 PFO PEM W3ECT143 PFO PFO PFO 24855+00 24855+05 24855+08 24855+14 24855+16 24855+18 24855+22 24855+22 24855+22 24857+43 24860+17 24860+17 24860+40 24865+00 24865+00 24865+00 24865+00 24865+00 24875+00 24880+00 24880+00 24885+00 8, 15, 16, 18 8, 16, 18 6a, 6b, 8, 15, 16, 18 8, 16, 18 8, 16, 6b, 8, 15, 16, 18 8, 16, 18 8, 15, 16, 18 8a, 8b, 8, 15, 16, 18 8, 15, 16, 18 6a, 6b, 8, 15, 16, 18 6a, 6b, 8, 16, 18 6a, 6b, 8, 16, 18
-----------------	----------------------------------------------------------------------------------------------------------------------------------------------------------------------------------------------------------------------------------------------------------------------------------------------------------------------------------------------------------------------------------------------------------------------------------------------------------------------------------------------------------------------------------------------------------------------------------------------------------------------------------------------------------------



CODE	% SLOPE	SPACING
A	< 5%	NO STRUCTURE
B	5 - 15%	300 FT
C	15 - 30%	200 FT
D	> 30%	100 FT

DWG. NO.	DESCRIPTION	REV	DRN	DATE	DESCRIPTION	ITEM NO.	DESCRIPTION	QTY
		0		06/29/2015	ISSUED FOR BID	1	36" O.D. x 0.520" W.T., API 5L X70, FBE 16 MILS w/I.D. EPOXY 1.7 MILS	1038 LF
		1		03/14/2016	ISSUED FOR CONSTRUCTION	3	36" O.D. x 0.750" W.T., API 5L X70, FBE 16 MILS w/I.D. EPOXY 1.7 MILS	1962 LF
						3R	3R ELBOW, HIGH STRENGTH WROUGHT BUTT-WELD FITTING, 36" O.D.	1 EA
						GPW	GEOTEXTILE PIPE WEIGHT, 9000 LBS	80 EA

ENGINEERING APPROVALS			
CONSTRUCTION		SIGNATURE	
TITLE	SIGNATURE	DATE	DATE
DRAWN BY: GIE	FSR	06/29/2015	03/14/2016
CHK. DATE:	DRS	06/29/2015	JC

**SABAL TRAIL PROJECT
PROPOSED 36" PIPELINE
STA. 24855+00 TO STA. 24885+00
ALIGNMENT SHEET**

LOC. POLK COUNTY, FLORIDA

YEAR: 2017 SHEET: 479 OF 492 SCALE: 1" = 200' DWG. 1657-PL-DG-70197-479 REV. 1

Document Path: \\GIS\1657\Deliverables\Alignment\Sheets\1657-PL-DG-70197-479.mxd