

RIGHT - OF - WAY TRACT NUMBERS	22500+00		22510+00		22530+00	
	GSA-FL-SUM-104.000		GSA-FL-SUM-104.005		GSA-FL-SUM-107.000	
RODDAGE	64.7		139.3		117.2	
SURVEY DATA SURVEY COMPANY: FIELD BOOK: PAGES:	<p>220927.9 P.I. = 42° 40' 00" LT. 220928.0 P.I. = 42° 38' 30" LT. 220928.1 P.I. = 42° 36' 30" LT. 220928.2 P.I. = 42° 34' 30" LT. 220928.3 P.I. = 42° 32' 30" LT. 220928.4 P.I. = 42° 30' 30" LT. 220928.5 P.I. = 42° 28' 30" LT. 220928.6 P.I. = 42° 26' 30" LT. 220928.7 P.I. = 42° 24' 30" LT. 220928.8 P.I. = 42° 22' 30" LT. 220928.9 P.I. = 42° 20' 30" LT. 220929.0 P.I. = 42° 18' 30" LT. 220929.1 P.I. = 42° 16' 30" LT. 220929.2 P.I. = 42° 14' 30" LT. 220929.3 P.I. = 42° 12' 30" LT. 220929.4 P.I. = 42° 10' 30" LT. 220929.5 P.I. = 42° 08' 30" LT. 220929.6 P.I. = 42° 06' 30" LT. 220929.7 P.I. = 42° 04' 30" LT. 220929.8 P.I. = 42° 02' 30" LT. 220929.9 P.I. = 42° 00' 30" LT.</p>					
CLASS LOCATION	CLASS 1					
MINIMUM DEPTH OF COVER	4'		5'		4'	
PIPE MATERIAL - 3R, FITTING SET ON WEIGHT, GPW, GEOTEXTILE PIPE WEIGHT	5300'					

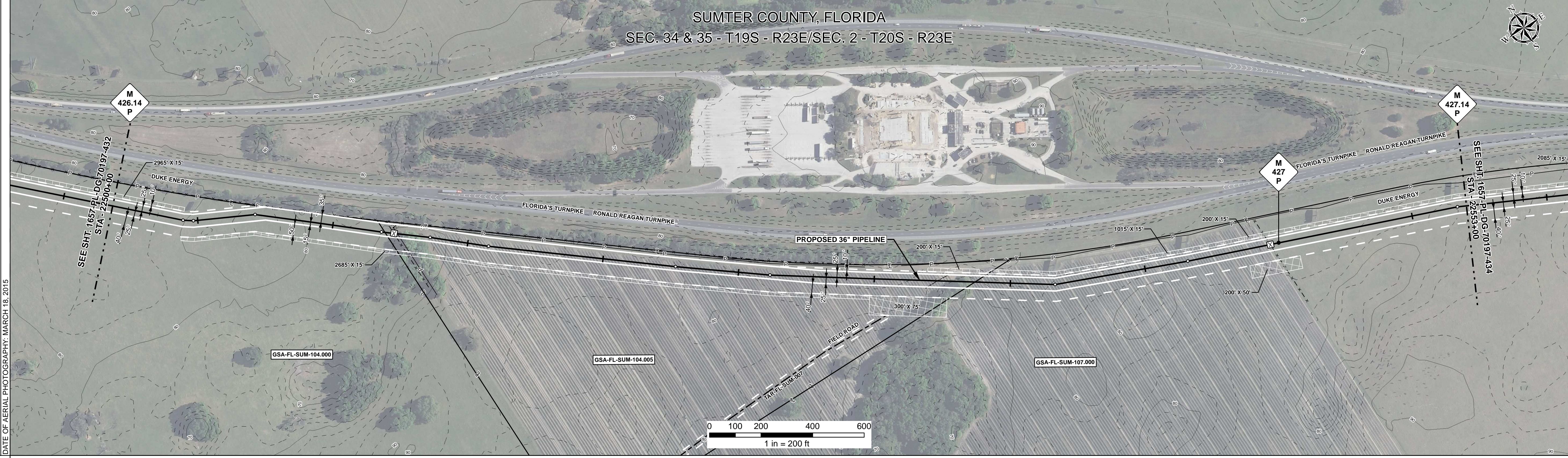
**ALIGNMENT DETAIL**

PROPOSED PIPELINE  
 PROPOSED PERMANENT EASEMENT  
 TEMP WORKSPACE  
 ADD. TEMP. WORKSPACE  
 EASEMENT LINE  
 CL STREAM/CREEK/DITCH  
 EDGE OF WATER  
 CL LEVEE  
 FIELD DELINEATED WETLAND  
 STREAM/DRAIN/WATERBODY BNDRY  
 CL ROAD  
 EDGE OF ROAD PAVEMENT/CURB  
 CL CULVERT  
 CL RAILROAD  
 ACCESS ROAD (PAR/TAR)  
 STRUCTURE  
 CONTOUR MAJOR (EVERY 10')  
 CONTOUR MINOR (EVERY 2')  
 PIPELINE MILEPOST  
 PIPELINE MILEPOST 10TH  
 PROPERTY LINE  
 UNDERGROUND WATERLINE  
 UNDERGROUND COM. CABLE  
 UNDERGROUND POWERLINE  
 UNDERGROUND SANITARY SEWER  
 OVERHEAD POWERLINE  
 OVERHEAD TELEPHONE  
 VERIFIED PIPELINE  
 FENCE  
 TOP / TOE

DATE OF AERIAL PHOTOGRAPHY: MARCH 18, 2015

TRANS. TOWER  
 GUY ANCHOR  
 HDD ENTRY/EXIT  
 FIRE HYDRANT  
 UTILITY POLE  
 AERIAL MARKER  
 ELEC., WATER, SAN. SEWER, GAS  
 TELE. & STORM DRAIN MANHOLES

WELL  
 SEPTIC  
 VALVE  
 METER  
 SPREAD BREAK



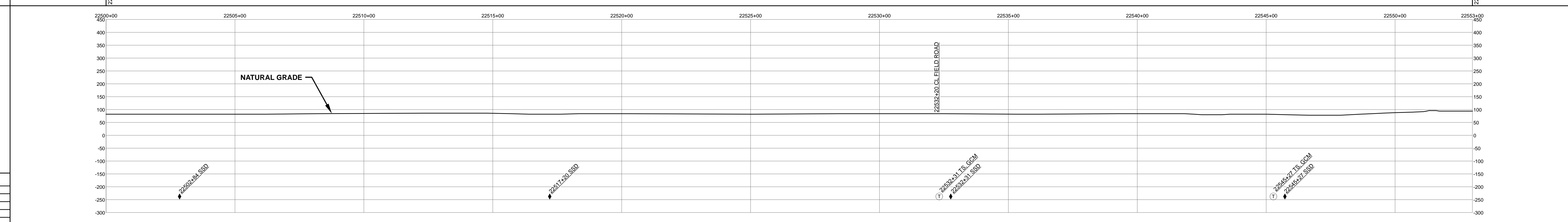
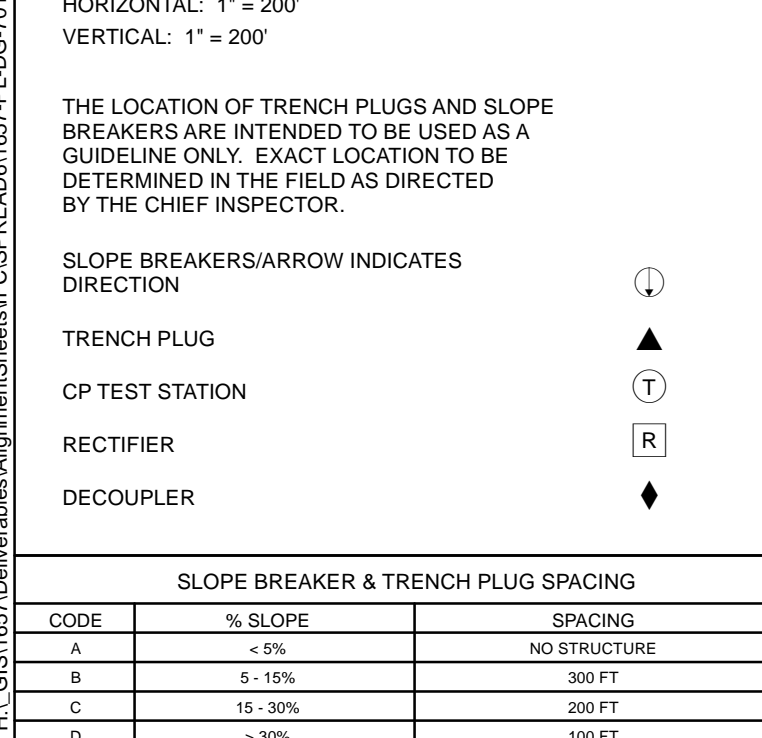
**REFERENCE DRAWING**

**ENVIRONMENTAL SURVEY DATA**

**SENSITIVE AREAS**

6a, 6b, 8, 16, 18

**PROFILE**



**HYDROSTATIC TEST SECTION**

REFERENCE DRAWINGS		REVISIONS				MATERIALS	
DWG. NO.	DESCRIPTION	REV	DRN	DATE	DESCRIPTION	ITEM NO.	QTY
		0		06/29/2015	ISSUED FOR BID	1	5300 LF
		1		03/14/2016	ISSUED FOR CONSTRUCTION		

ENGINEERING APPROVALS			
BID		CONSTRUCTION	
TITLE	SIGNATURE	DATE	DATE
DRAWN BY: GIE	FSR	06/29/2015	03/14/2016
DRN. DATE: 01/04/2016			
CHECKED BY: GIE	DRS	06/29/2015	JC
CHK. DATE:			

TEST SECTION 29

**SABAL TRAIL PROJECT  
 PROPOSED 36" PIPELINE  
 STA. 22500+00 TO STA. 22553+00  
 ALIGNMENT SHEET**

LOC. SUMTER COUNTY, FLORIDA

YEAR: 2017 SHEET: 433 OF 492 SCALE: 1" = 200' DWG. 1657-PL-DG-70197-433 REV. 1

Document Path: H:\GSA\1657\Deliverables\Alignment\Sheets\1657-PL-DG-70197-433.mxd