

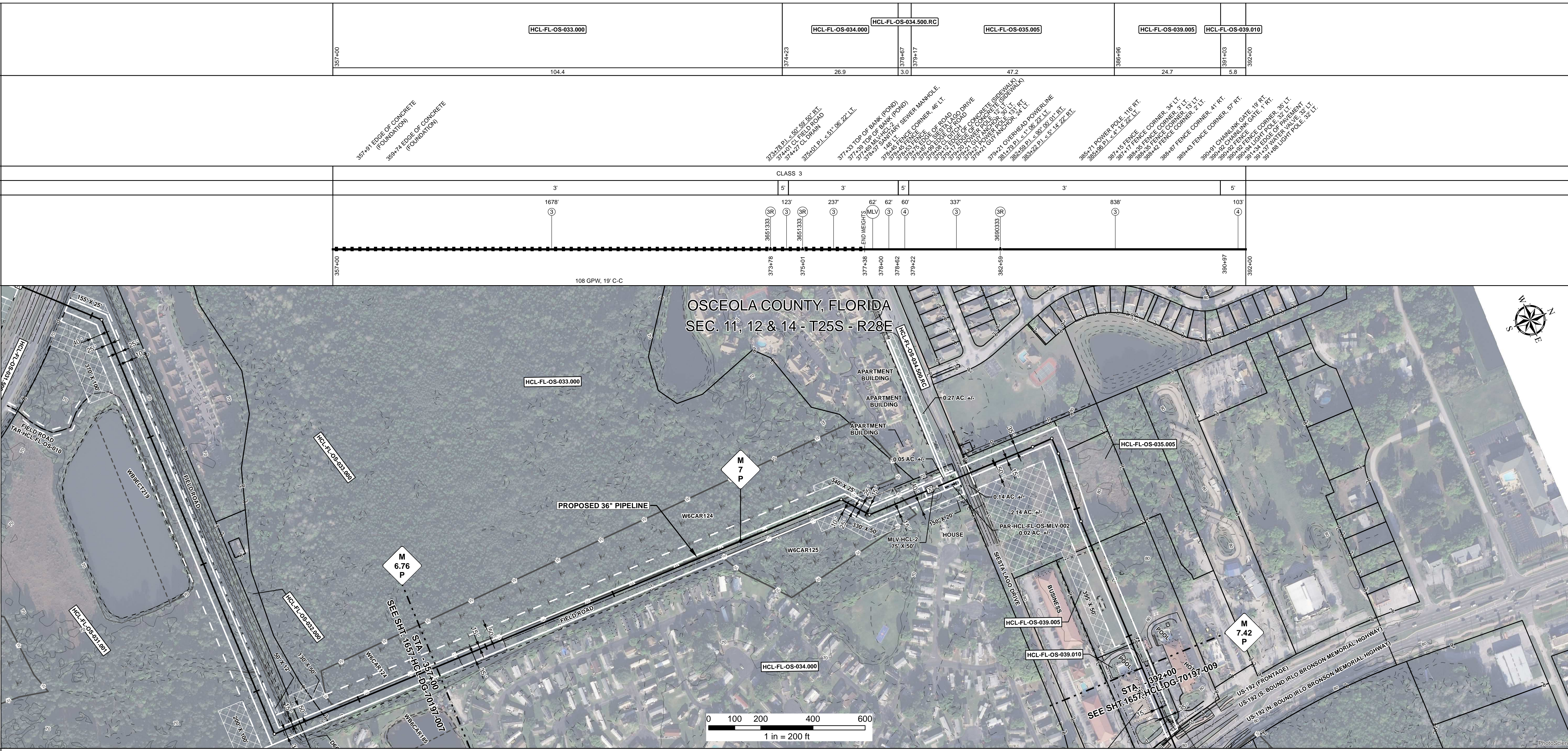
<b>RIGHT - OF - WAY</b>		CROSSING
TRACT NUMBERS		
RODDAGE		

<b>SURVEY DATA</b>	
SURVEY COMPANY:	
FIELD BOOK:	
PAGES:	

<b>CLASS LOCATION</b>	
<b>MINIMUM DEPTH OF COVER</b>	

<b>PIPE MATERIAL</b>	
3R, FITTING SET ON WEIGHT, GPW, GEOTEXTILE PIPE WEIGHT	

<b>ALIGNMENT DETAIL</b>	
<ul style="list-style-type: none"> <li>PROPOSED PIPELINE</li> <li>PROPOSED PERMANENT EASEMENT</li> <li>TEMP WORKSPACE</li> <li>ADD. TEMP. WORKSPACE</li> <li>EASEMENT LINE</li> <li>CL STREAM/CREEK/DITCH</li> <li>EDGE OF WATER</li> <li>CL LEVEE</li> <li>FIELD DELINEATED WETLAND</li> <li>STREAM/DRAIN/WATERBODY BNDRY</li> <li>CL ROAD</li> <li>EDGE OF ROAD/PAVEMENT/CURB</li> <li>CL CULVERT</li> <li>CL RAILROAD</li> <li>ACCESS ROAD (PAR/TAR)</li> <li>STRUCTURE</li> <li>CONTOUR MAJOR (EVERY 10')</li> <li>CONTOUR MINOR (EVERY 2')</li> <li>PIPELINE MILEPOST</li> <li>PIPELINE MILEPOST 10TH</li> <li>PROPERTY LINE</li> <li>UNDERGROUND WATERLINE</li> <li>UNDERGROUND COM. CABLE</li> <li>UNDERGROUND POWERLINE</li> <li>UNDERGROUND SANITARY SEWER</li> <li>OVERHEAD POWERLINE</li> <li>OVERHEAD TELEPHONE</li> <li>VERIFIED PIPELINE</li> <li>FENCE</li> <li>TOP / TOE</li> </ul>	
<ul style="list-style-type: none"> <li>TRANS. TOWER</li> <li>GUY ANCHOR</li> <li>HDD ENTRY/EXIT</li> <li>FIRE HYDRANT</li> <li>UTILITY POLE</li> <li>AERIAL MARKER</li> <li>ELEC., WATER, SAN. SEWER, GAS TELE. &amp; STORM DRAIN MANHOLES</li> <li>WELL</li> <li>SEPTIC</li> <li>VALVE</li> <li>METER</li> <li>SPREAD BREAK</li> </ul>	

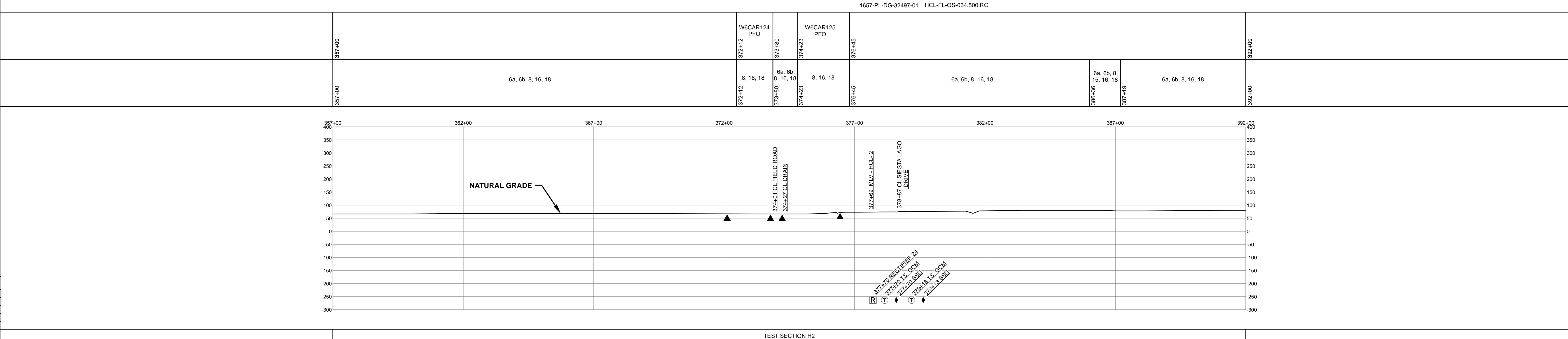


<b>REFERENCE DRAWING</b>	1657-PL-DG-32497-01 HCL-FL-OS-034.500.RC
--------------------------	--

<b>ENVIRONMENTAL SURVEY DATA</b>	
----------------------------------	--

<b>SENSITIVE AREAS</b>	
------------------------	--

<b>PROFILE</b>		
SCALE: HORIZONTAL: 1" = 200' VERTICAL: 1" = 200'		
THE LOCATION OF TRENCH PLUGS AND SLOPE BREAKERS ARE INTENDED TO BE USED AS A GUIDELINE ONLY. EXACT LOCATION TO BE DETERMINED IN THE FIELD AS DIRECTED BY THE CHIEF INSPECTOR.		
SLOPE BREAKERS/ARROW INDICATES DIRECTION		
TRENCH PLUG	▲	
CP TEST STATION	T	
RECTIFIER	R	
DECOUPLER	◆	
SLOPE BREAKER & TRENCH PLUG SPACING		
CODE	% SLOPE	SPACING
A	< 5%	NO STRUCTURE
B	5 - 15%	300 FT
C	15 - 30%	200 FT
D	> 30%	100 FT



<b>HYDROSTATIC TEST SECTION</b>			
REFERENCE DRAWINGS			
DWG. NO.	DESCRIPTION		
IC-G-1000-MLV2	PILOT PLAN 36" MAINLINE VALVE HCL NO. 2		
1657-PL-DG-35223	MP 7.15 (HCL) - SIESTA LAGO DR. CP GROUNDBED #24		
REV	DRN	DATE	DESCRIPTION
0		06/29/2015	ISSUED FOR BID
1		03/14/2016	ISSUED FOR CONSTRUCTION

<b>MATERIALS</b>			
ITEM NO.	DESCRIPTION	QTY	
3	36" O.D. x 0.750" W.T., API 5L X70, FBE 16 MILS w/I.D. EPOXY 1.7 MILS	3275 LF	
4	36" O.D. x 0.750" W.T., API 5L X70, FBE 16 MILS, ARO 24 MILS, w/I.D. EPOXY 1.7 MILS	163 LF	
	MLV	MAINLINE VALVE ASSEMBLY	62 LF
	3R	3R ELBOW, HIGH STRENGTH WROUGHT BUTT-WELD FITTING, 36" O.D.	3
	GPW	GEOTEXTILE PIPE WEIGHT, 9000 LBS	108 EA

<b>TEST SECTION H2</b>			
<b>ENGINEERING APPROVALS</b>		<b>SABAL TRAIL PROJECT PROPOSED 36" HUNTERS CREEK PIPELINE STA. 357+00 TO STA. 392+00 ALIGNMENT SHEET</b>	
<b>BID</b>		<b>CONSTRUCTION</b>	
TITLE	SIGNATURE	DATE	DATE
DRAWN BY: GIE	FSR	06/29/2015	03/14/2016
DRN. DATE: 01/04/2016			
CHECKED BY: GIE	DRS	06/29/2015	JC 03/14/2016
CHK. DATE:			
LOC.	OSCEOLA COUNTY, FLORIDA		
YEAR: 2017	SHEET: 8 of 14	SCALE: 1" = 200'	DWG. 1657-HCL-DG-70197-008 REV. 1

Document Path: G:\GIS\1657\Deliverables\Alignments\Sheet\1657-HCL-DG-70197-008.mxd