

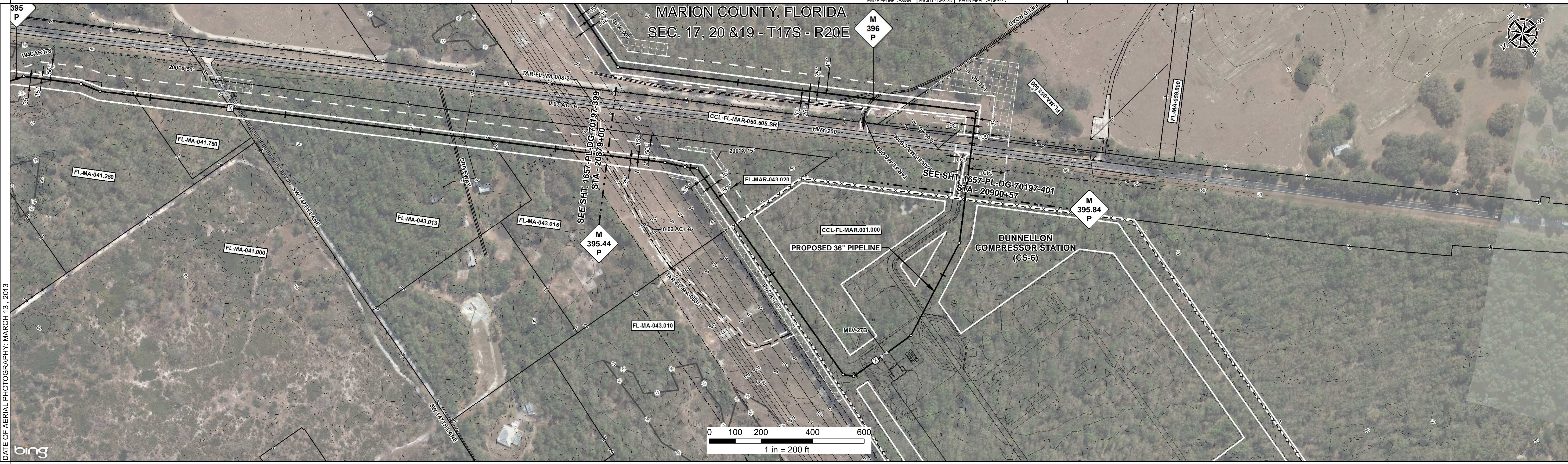
RIGHT - OF - WAY	CROSSING	TRACT NUMBERS	FL-MA-043.015	FL-MA-043.020	FL-MA-043.010	CCL-FL-MAR-001.000	20900+57	
RODDAGE		20879+00	20.2	20882+33	17.8	20885+26	92.8	
SURVEY DATA		SURVEY COMPANY: FIELD BOOK: PAGES:						
CLASS LOCATION		CLASS 1						
MINIMUM DEPTH OF COVER		5'		3'				
PIPE MATERIAL		328'	40'	979'	40'	105'	84'	498'
		(1)	(3)	(3)	(3)	(3)	(3)	(3)
		- 3R, FITTING						
		SET ON WEIGHT, GPW, GEOTEXTILE PIPE WEIGHT						

ALIGNMENT DETAIL

DATE OF AERIAL PHOTOGRAPHY: MARCH 13, 2013

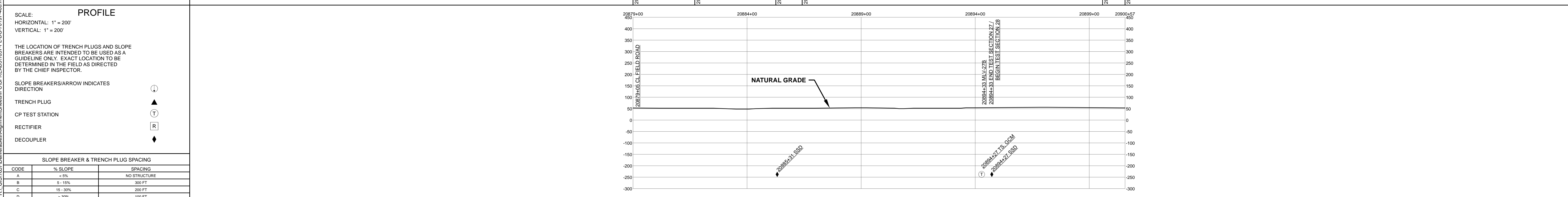
PROPOSED PIPELINE	[Symbol]
PROPOSED PERMANENT EASEMENT	[Symbol]
TEMP WORKSPACE	[Symbol]
ADD. TEMP. WORKSPACE	[Symbol]
EASEMENT LINE	[Symbol]
CL STREAM/CREEK/DITCH	[Symbol]
EDGE OF WATER	[Symbol]
CL LEVEE	[Symbol]
FIELD DELINEATED WETLAND	[Symbol]
STREAM/DRAIN/WATERBODY BNDRY	[Symbol]
CL ROAD	[Symbol]
EDGE OF ROAD/PAVEMENT/CURB	[Symbol]
CL CULVERT	[Symbol]
CL RAILROAD	[Symbol]
ACCESS ROAD (PAR/TAR)	[Symbol]
STRUCTURE	[Symbol]
CONTOUR MAJOR (EVERY 10')	[Symbol]
CONTOUR MINOR (EVERY 2')	[Symbol]
PIPELINE MILEPOST	[Symbol]
PIPELINE MILEPOST 10TH	[Symbol]
PROPERTY LINE	[Symbol]
UNDERGROUND WATERLINE	[Symbol]
UNDERGROUND COM. CABLE	[Symbol]
UNDERGROUND POWERLINE	[Symbol]
UNDERGROUND SANITARY SEWER	[Symbol]
OVERHEAD POWERLINE	[Symbol]
OVERHEAD TELEPHONE	[Symbol]
VERIFIED PIPELINE	[Symbol]
FENCE	[Symbol]
TOP / TOE	[Symbol]

TRANS. TOWER	[Symbol]
GUY ANCHOR	[Symbol]
HDD ENTRY/EXIT	[Symbol]
FIRE HYDRANT	[Symbol]
UTILITY POLE	[Symbol]
AERIAL MARKER	[Symbol]
ELEC. WATER, SAN. SEWER, GAS	[Symbol]
TELE. & STORM DRAIN MANHOLES	[Symbol]
WELL	[Symbol]
SEPTIC	[Symbol]
VALVE	[Symbol]
METER	[Symbol]
SPREAD BREAK	[Symbol]



REFERENCE DRAWING	FL-MA-050.500.SR
ENVIRONMENTAL SURVEY DATA	

SENSITIVE AREAS	20879+00	20881+71	20885+26	20885+42	20889+00	20894+00	20899+00	20900+57
	6a, 6b, 8, 16, 18	6a, 6b, 8, 15, 16, 18	6a, 6b, 8, 16, 18	6a, 6b, 8, 15, 16, 18	6a, 6b, 8, 15, 16, 18	6a, 6b, 8, 15, 16, 18	6a, 6b, 8, 15, 16, 18	6a, 6b, 8, 15, 16, 18



HYDROSTATIC TEST SECTION		REFERENCE DRAWINGS				REVISIONS				MATERIALS			ENGINEERING APPROVALS				SABAL TRAIL PROJECT	
DWG. NO.	DESCRIPTION	REV	DRN	DATE	DESCRIPTION	ITEM NO.	DESCRIPTION	QTY	TITLE	SIGNATURE	DATE	SIGNATURE	DATE	YEAR: 2017 SHEET: 400 OF 492 SCALE: 1" = 200' DWG. 1657-PL-DG-70197-400 REV. 1				
1-G-1000-CS6	PIPING PLOT PLAN DUNNELLON COMPRESSOR STATION (CS-6)	0		06/29/2015	ISSUED FOR BID	1	36" O.D. x 0.520" W.T., API 5L X70, FBE 16 MILS w/I.D. EPOXY 1.7 MILS	328 LF	CONSTRUCTION									
		1		03/14/2016	ISSUED FOR CONSTRUCTION	3	36" O.D. x 0.750" W.T., API 5L X70, FBE 16 MILS w/I.D. EPOXY 1.7 MILS	1746 LF										
						3R	3R ELBOW, HIGH STRENGTH WROUGHT BUTT-WELDED FITTING, 36" O.D.	4 EA										