

RIGHT - OF - WAY	CROSSING											
TRACT NUMBERS	<div style="display: flex; justify-content: space-between;"> 19154+00 19164+00 19174+00 19184+00 19194+00 19204+00 19207+00 </div>											
RODDAGE	<div style="display: flex; justify-content: space-between;"> 85.2 48.9 4.3 8.2 2.0 12.4 7.4 16.4 4.7 1.8 19.9 14.1 13.9 27.2 36.5 6.1 6.6 5.7 </div>											
SURVEY DATA	<p>SURVEY COMPANY:</p> <p>FIELD BOOK:</p> <p>PAGES:</p>											
CLASS LOCATION	<div style="display: flex; justify-content: space-between;"> CLASS 1 CLASS 2 CLASS 1 </div>											
MINIMUM DEPTH OF COVER	<div style="display: flex; justify-content: space-between;"> 4' 5' 4' 5' 3' 5' 3' 5' </div>											
PIPE MATERIAL	<div style="display: flex; justify-content: space-between;"> 505' ① 1760' ② 176' 595' 102' 1947' 130' 85' </div>											
ALIGNMENT DETAIL	<p>SR, FITTING</p> <p>SET ON WEIGHT, GPM, GEOTEXTILE PIPE WEIGHT</p>											

ALIGNMENT DETAIL

DATE OF AERIAL PHOTOGRAPHY: MARCH 13, 2013

PROPOSED PIPELINE

PROPOSED PERMANENT EASEMENT

TEMP WORKSPACE

ADD. TEMP. WORKSPACE

EASEMENT LINE

CL STREAM/CREEK/DITCH

EDGE OF WATER

CL LEVEE

FIELD DELINEATED WETLAND

STREAM/DRAIN/WATERBODY BNDRY

CL ROAD

EDGE OF ROAD/PAVEMENT/CURB

CL CULVERT

CL RAILROAD

ACCESS ROAD (PAR/TAR)

STRUCTURE

CONTOUR MAJOR (EVERY 10')

CONTOUR MINOR (EVERY 2')

PIPELINE MILEPOST

PIPELINE MILEPOST 10TH

PROPERTY LINE

UNDERGROUND WATERLINE

UNDERGROUND COM. CABLE

UNDERGROUND POWERLINE

UNDERGROUND SANITARY SEWER

OVERHEAD POWERLINE

OVERHEAD TELEPHONE

VERIFIED PIPELINE

FENCE

TOP / TOE

TRANS. TOWER

GUY ANCHOR

HDD ENTRY/EXIT

FIRE HYDRANT

UTILITY POLE

AERIAL MARKER

ELEC. WATER, SAN. SEWER, GAS

TELE. & STORM DRAIN MANHOLES

WELL

SEPTIC

VALVE

METER

M

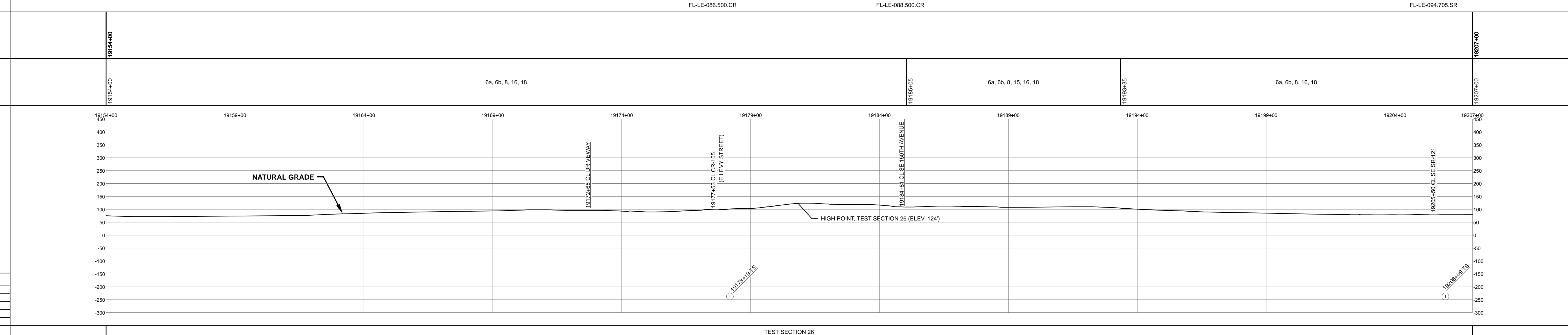
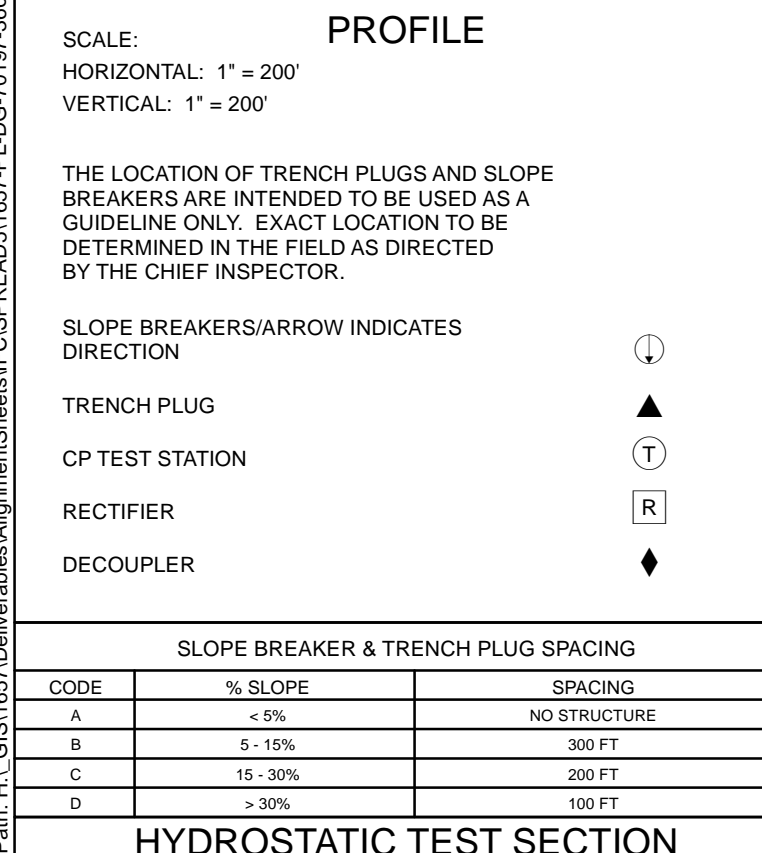
SPREAD BREAK



REFERENCE DRAWING

ENVIRONMENTAL SURVEY DATA

SENSITIVE AREAS



HYDROSTATIC TEST SECTION

DWG. NO.	DESCRIPTION	REV	DRN	DATE	REVISIONS	ITEM NO.	DESCRIPTION	QTY
		0		06/29/2015	ISSUED FOR BID	1	36" O.D. x 0.520" W.T., API 5L X70, FBE 16 MILS w/I.D. EPOXY 1.7 MILS	590 LF
		1		03/14/2016	ISSUED FOR CONSTRUCTION	2	36" O.D. x 0.625" W.T., API 5L X70, FBE 16 MILS w/I.D. EPOXY 1.7 MILS	4302 LF
						4	36" O.D. x 0.750" W.T., API 5L X70, FBE 16 MILS, ARO 24 MILS, w/I.D. EPOXY 1.7 MILS	408 LF

REFERENCE DRAWINGS				REVISIONS				MATERIALS					

TEST SECTION 26

ENGINEERING APPROVALS			
BID		CONSTRUCTION	
TITLE	SIGNATURE	DATE	DATE
DRAWN BY: GIE	FSR	06/29/2015	03/14/2016
DRN. DATE: 01/04/2016			
CHECKED BY: GIE	DRS	06/29/2015	JC
CHK. DATE:			

SABAL TRAIL PROJECT

PROPOSED 36" PIPELINE

STA. 19154+00 TO STA. 19207+00

ALIGNMENT SHEET

LOC. LEVY COUNTY, FLORIDA

YEAR: 2017 SHEET: 366 OF 492 SCALE: 1" = 200' DWG. 1657-PL-DG-70197-366 REV. 1

Document Path: H:\GIS\1657\Deliverables\Alignment\Sheets\1657-PL-DG-70197-366.mxd