

RIGHT - OF - WAY	CROSSING		12965+00	GA-LO-077.000	12981+00	GA-LO-078.000	12998+00	GA-LO-077.000	13011+00	GA-LO-078.000	13018+00
TRACT NUMBERS											
RODDAGE			161.8		28.6		93.3		37.5		

SURVEY DATA	SURVEY COMPANY: FIELD BOOK: PAGES:										
CLASS LOCATION	CLASS 1										

MINIMUM DEPTH OF COVER	3'	5'	3'	5'	4'	3'	
PIPE MATERIAL	3453' ①			365' ③			1482' ①
PIPE MATERIAL	- 3R, FITTING			22 GPW, 19" C-C			
PIPE MATERIAL	SET ON WEIGHT, GPW, GEOTEXTILE PIPE WEIGHT			END WEIGHTS			

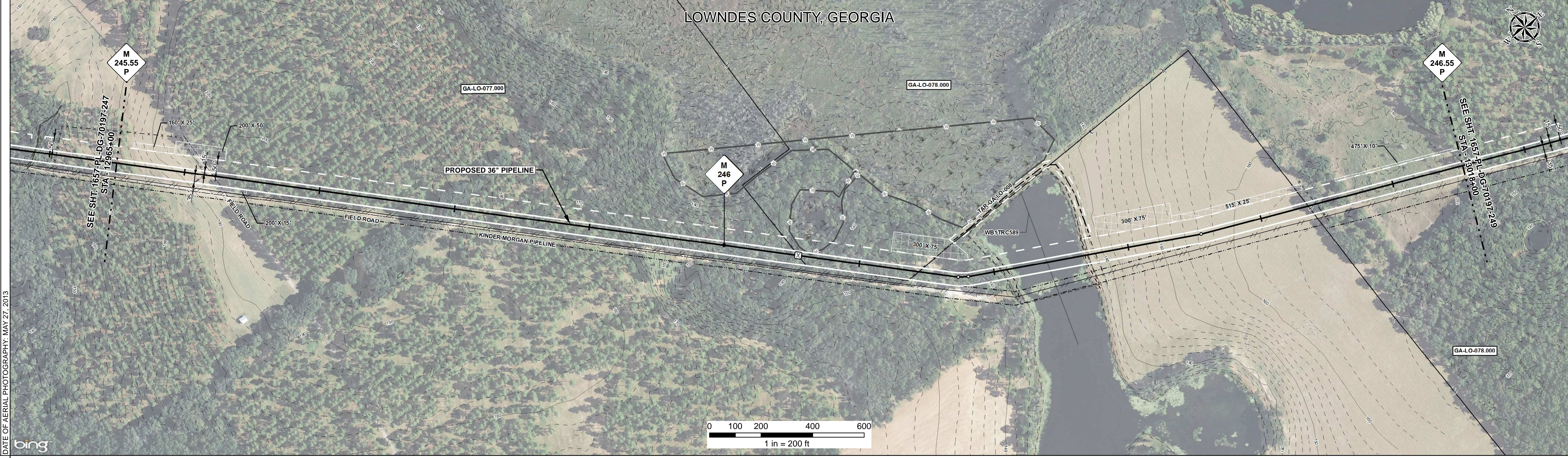
ALIGNMENT DETAIL

PROPOSED PIPELINE
 PROPOSED PERMANENT EASEMENT
 TEMP WORKSPACE
 ADD. TEMP. WORKSPACE
 EASEMENT LINE
 CL STREAM/CREEK/DITCH
 EDGE OF WATER
 CL LEVEE
 FIELD DELINEATED WETLAND
 STREAM/DRAIN/WATERBODY BNDRY
 CL ROAD
 EDGE OF ROAD/PAVEMENT/CURB
 CL CULVERT
 CL RAILROAD
 ACCESS ROAD (PAR/TAR)
 STRUCTURE
 CONTOUR MAJOR (EVERY 10')
 CONTOUR MINOR (EVERY 2')
 PIPELINE MILEPOST
 PIPELINE MILEPOST 10TH
 PROPERTY LINE
 UNDERGROUND WATERLINE
 UNDERGROUND COM. CABLE
 UNDERGROUND POWERLINE
 UNDERGROUND SANITARY SEWER
 OVERHEAD POWERLINE
 OVERHEAD TELEPHONE
 VERIFIED PIPELINE
 FENCE
 TOP / TOE

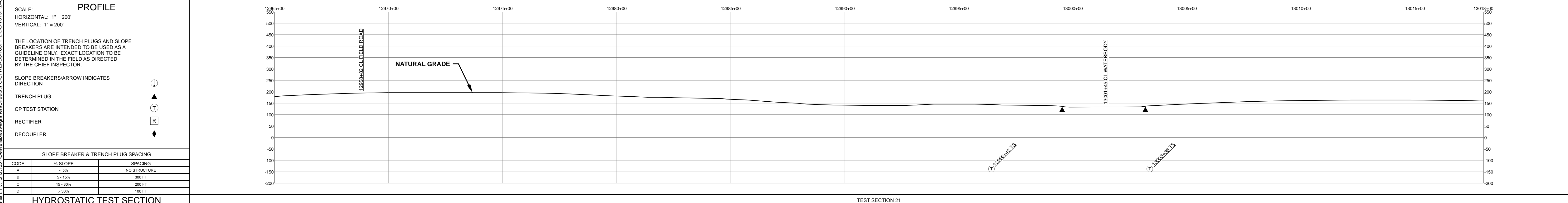
TRANS. TOWER
 GUY ANCHOR
 HDD ENTRY/EXIT
 FIRE HYDRANT
 UTILITY POLE
 AERIAL MARKER
 ELEC. WATER, SAN. SEWER, GAS
 TELE. & STORM DRAIN MANHOLES

WELL
 SEPTIC
 VALVE
 METER
 SPREAD BREAK

DATE OF AERIAL PHOTOGRAPHY: MAY 27, 2013



REFERENCE DRAWING											
ENVIRONMENTAL SURVEY DATA											
SENSITIVE AREAS	6a, 6b, 8, 16, 18										



HYDROSTATIC TEST SECTION				REVISIONS				MATERIALS				ENGINEERING APPROVALS				SABAL TRAIL PROJECT PROPOSED 36" PIPELINE STA. 12965+00 TO STA. 13018+00 ALIGNMENT SHEET								
DWG. NO.	DESCRIPTION			REV	DRN	DATE	DESCRIPTION	ITEM NO.	DESCRIPTION			QTY	TITLE		SIGNATURE	DATE	CONSTRUCTION		LOC.	YEAR	SHEET	SCALE	DWG.	REV.
				0		06/29/2015	ISSUED FOR BID	1	36" O.D. x 0.520" W.T., API 5L X70, FBE 16 MILS w/I.D. EPOXY 1.7 MILS			4935 LF	FRS			06/29/2015	FRS		LOWNDES COUNTY, GEORGIA	2017	248 OF 492	1" = 200'	1657-PL-DG-70197-248	1
				1		03/14/2016	ISSUED FOR CONSTRUCTION	3	36" O.D. x 0.750" W.T., API 5L X70, FBE 16 MILS w/I.D. EPOXY 1.7 MILS			365 LF	DRS			06/29/2015	JC							
								GPW	GEOTEXTILE PIPE WEIGHT, 9000 LBS			22 EA	GIE			01/04/2016								
													GIE											
													GIE											

Document Path: H:\GIS\1657\Deliverables\Alignment\Sheets\1657-PL-DG-70197-248.mxd