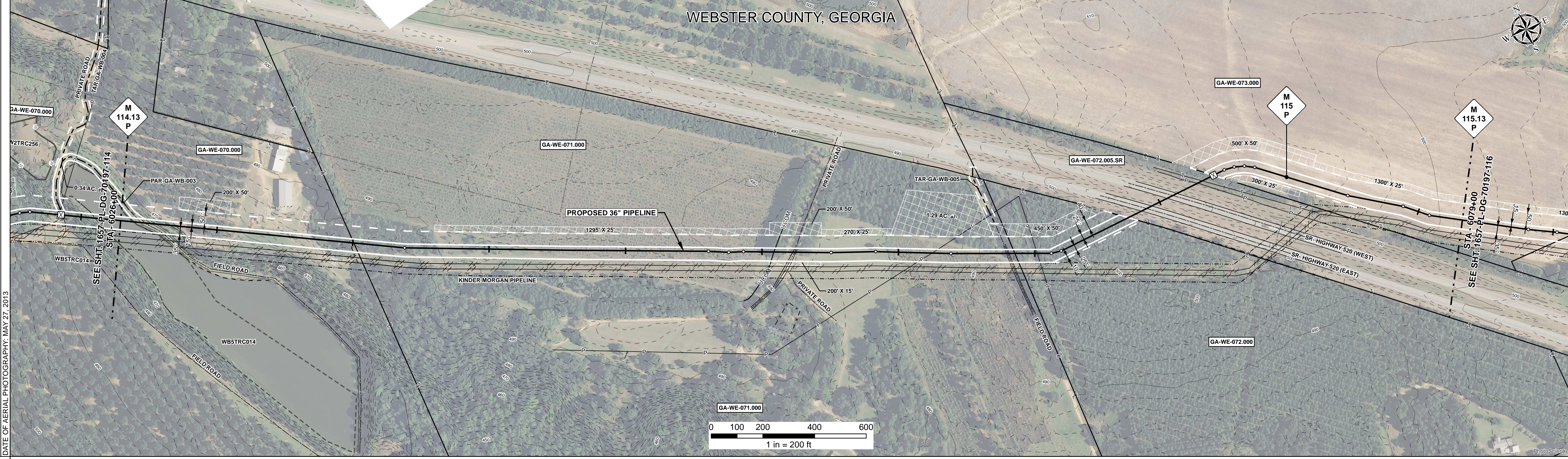


RIGHT - OF - WAY	CROSSING		CLASS 1		CLASS 1		CLASS 1		CLASS 1		CLASS 1	
TRACT NUMBERS			GA-WE-070.000		GA-WE-071.000		GA-WE-072.000		GA-WE-072.005.SR		GA-WE-073.000	
RODDAGE	55.0		155.0		28.5		22.3		60.4			

SURVEY DATA	CLASS LOCATION		MINIMUM DEPTH OF COVER		PIPE MATERIAL		PIPE MATERIAL		PIPE MATERIAL		PIPE MATERIAL	
SURVEY COMPANY: FIELD BOOK: PAGES:	CLASS 1		5'		- SR, FITTING		401'		974'			
	6026+40, 6026+43, 6026+48, 6026+53, 6026+58, 6026+63, 6026+68, 6026+73, 6026+78		3'		SET ON WEIGHT, GPW, GEOTEXTILE PIPE WEIGHT		6065+25, 6065+26		6079+40			

### ALIGNMENT DETAIL

- PROPOSED PIPELINE
- PROPOSED PERMANENT EASEMENT
- TEMP WORKSPACE
- ADD. TEMP WORKSPACE
- EASEMENT LINE
- CL STREAM/CREEK/DITCH
- EDGE OF WATER
- CL LEVEE
- FIELD DELINEATED WETLAND
- STREAM/DRAIN/WATERBODY BNDRY
- CL ROAD
- EDGE OF ROAD/PAVEMENT/CURB
- CL CULVERT
- CL RAILROAD
- ACCESS ROAD (PAR/TAR)
- STRUCTURE
- CONTOUR MAJOR (EVERY 10')
- CONTOUR MINOR (EVERY 2')
- PIPELINE MILEPOST
- PIPELINE MILEPOST 10TH
- PROPERTY LINE
- UNDERGROUND WATERLINE
- UNDERGROUND COM. CABLE
- UNDERGROUND POWERLINE
- UNDERGROUND SANITARY SEWER
- OVERHEAD POWERLINE
- OVERHEAD TELEPHONE
- VERIFIED PIPELINE
- FENCE
- TOP / TOE



REFERENCE DRAWING	ENVIRONMENTAL SURVEY DATA		SENSITIVE AREAS	
1657-PL-DG-32650	WBSTRC014		6a, 6b, 18	

### PROFILE

SCALE:  
HORIZONTAL: 1" = 200'  
VERTICAL: 1" = 200'

THE LOCATION OF TRENCH PLUGS AND SLOPE BREAKERS ARE INTENDED TO BE USED AS A GUIDELINE ONLY. EXACT LOCATION TO BE DETERMINED IN THE FIELD AS DIRECTED BY THE CHIEF INSPECTOR.

SLOPE BREAKERS/ARROW INDICATES DIRECTION

TRENCH PLUG

CP TEST STATION

RECTIFIER

DECOUPLER



### HYDROSTATIC TEST SECTION

CODE	% SLOPE	SPACING
A	< 5%	NO STRUCTURE
B	5 - 15%	300 FT
C	15 - 30%	200 FT
D	> 30%	100 FT

REFERENCE DRAWINGS	REVISIONS	MATERIALS
DWG. NO.	REV DRN DATE DESCRIPTION	ITEM NO. DESCRIPTION QTY
	0 06/29/2015 ISSUED FOR BID	1 36" O.D. x 0.520" W.T., API 5L X70, FBE 16 MILS w/I.D. EPOXY 1.7 MILS 4836 LF
	1 03/14/2016 ISSUED FOR CONSTRUCTION	3 36" O.D. x 0.750" W.T., API 5L X70, FBE 16 MILS, w/I.D. EPOXY 1.7 MILS 63 LF
		4 36" O.D. x 0.750" W.T., API 5L X70, FBE 16 MILS, ARO 24 MILS, w/I.D. EPOXY 1.7 MILS 401 LF
		GPW GEOTEXTILE PIPE WEIGHT, 9000 LBS 4 EA

ENGINEERING APPROVALS
TITLE
SIGNATURE
DATE
CONSTRUCTION
SIGNATURE
DATE
DRAWN BY: GIE FSR 06/29/2015 FSR 03/14/2016
DRN DATE: 01/04/2016
CHECKED BY: GIE DRS 06/29/2015 JC 03/14/2016
CHK DATE:

**SABAL TRAIL PROJECT**  
PROPOSED 36" PIPELINE  
STA. 6026+00 TO STA. 6079+00  
ALIGNMENT SHEET

LOC. WEBSTER COUNTY, GEORGIA

YEAR: 2017 SHEET: 115 OF 492 SCALE: 1" = 200' DWG. 1657-PL-DG-70197-115 REV. 1

Document Path: H:\GIS\1657\Deliverables\Alignment\Sheets\1657-PL-DG-70197-115.mxd