

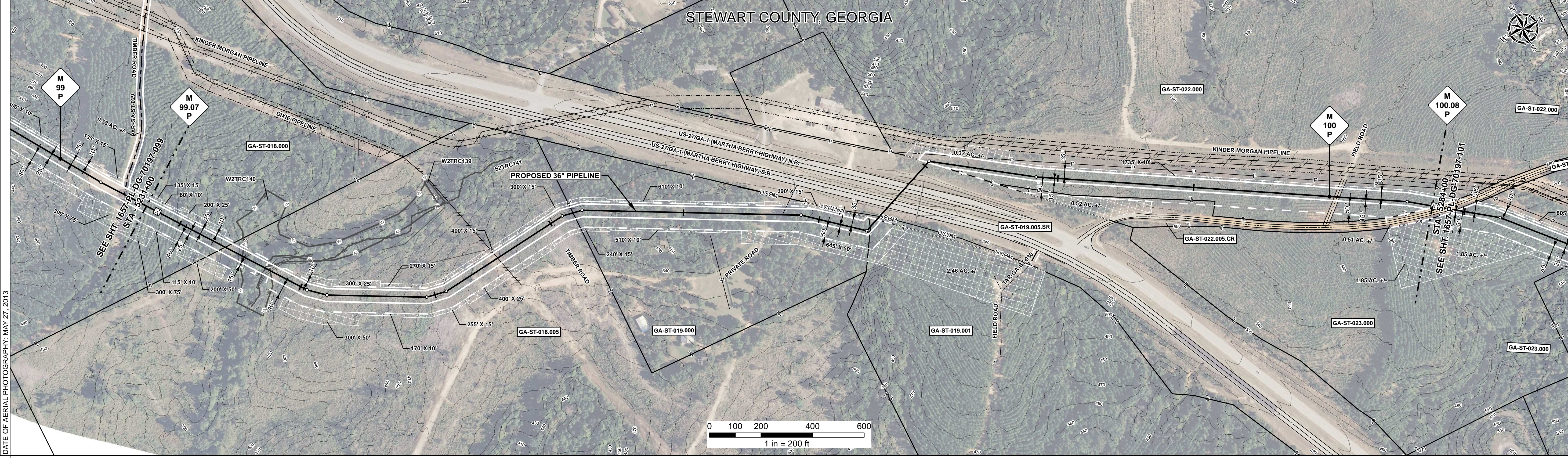
RIGHT - OF - WAY TRACT NUMBERS	GA-ST-018.000		GA-ST-018.005		GA-ST-019.000		GA-ST-019.001		GA-ST-019.005.SR		GA-ST-022.000	
	21.0		89.9		70.8		2.3		18.1		119.2	
RODDAGE	5231+00		5234+46		5249+30		5250+36		5251+36		5264+00	
SURVEY DATA	SURVEY COMPANY: FIELD BOOK: PAGES:											
CLASS LOCATION	CLASS 1											
MINIMUM DEPTH OF COVER	3' 5' 3' 5' 3' 5' 3' 5' 3' 5' 3' 5'											
PIPE MATERIAL	3R, FITTING SET ON WEIGHT, GPW, GEOTEXTILE PIPE WEIGHT											

ALIGNMENT DETAIL

PROPOSED PIPELINE
 PROPOSED PERMANENT EASEMENT
 TEMP WORKSPACE
 ADD. TEMP WORKSPACE
 EASEMENT LINE
 CL STREAM/CREEK/DITCH
 EDGE OF WATER
 CL LEVEE
 FIELD DELINEATED WETLAND
 STREAM/DRAIN/WATERBODY BNDRY
 CL ROAD
 EDGE OF ROAD/PAVEMENT/CURB
 CL CULVERT
 CL RAILROAD
 ACCESS ROAD (PAR/TAR)
 STRUCTURE
 CONTOUR MAJOR (EVERY 10')
 PIPELINE MILEPOST
 PIPELINE MILEPOST 10TH
 PROPERTY LINE
 UNDERGROUND WATERLINE
 UNDERGROUND COM. CABLE
 UNDERGROUND POWERLINE
 UNDERGROUND SANITARY SEWER
 OVERHEAD POWERLINE
 OVERHEAD TELEPHONE
 VERIFIED PIPELINE
 FENCE
 TOP / TOE

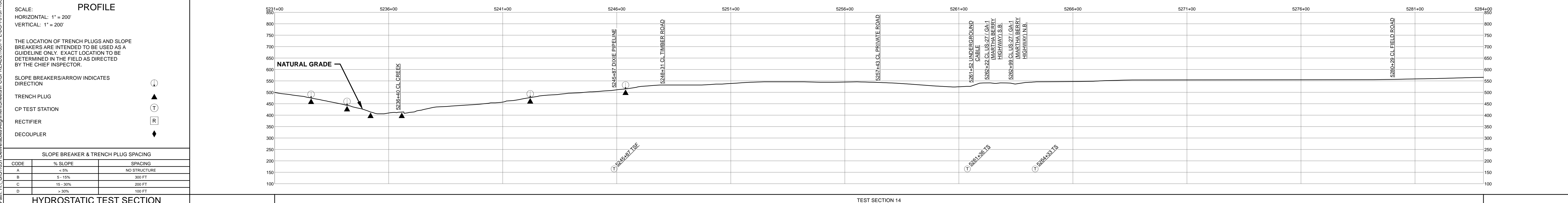
TRANS. TOWER
 GUY ANCHOR
 HDD ENTRY/EXIT
 FIRE HYDRANT
 UTILITY POLE
 AERIAL MARKER
 ELEC. WATER, SAN. SEWER, GAS
 TELE. & STORM DRAIN MANHOLES

WELL
 SEPTIC
 VALVE
 METER
 SPREAD BREAK



REFERENCE DRAWING	GA-ST-019.005.SR											
ENVIRONMENTAL SURVEY DATA	W2TRC140 PFO W2TRC140 PFO W2TRC140 PFO W2TRC140 PFO											

SENSITIVE AREAS	6a, 6b, 18											
-----------------	------------	--	--	--	--	--	--	--	--	--	--	--



HYDROSTATIC TEST SECTION				REVISIONS				MATERIALS				ENGINEERING APPROVALS				SABAL TRAIL PROJECT PROPOSED 36" PIPELINE STA. 5231+00 TO STA. 5284+00 ALIGNMENT SHEET			
DWG. NO.	DESCRIPTION	REV	DRN	DATE	DESCRIPTION	ITEM NO.	DESCRIPTION	QTY	SIGNATURE		DATE		SIGNATURE		DATE		YEAR: 2017 SHEET: 100 OF 492 SCALE: 1" = 200' DWG. 1657-PL-DG-70197-100 REV. 1		
		0		06/29/2015	ISSUED FOR BID	1	36" O.D. x 0.520" W.T., API 5L X70, FBE 16 MILS w/I.D. EPOXY 1.7 MILS	4938 LF	FSR		06/29/2015		FSR		03/14/2016				
		1		03/14/2016	ISSUED FOR CONSTRUCTION	4	36" O.D. x 0.750" W.T., API 5L X70, FBE 16 MILS, ARO 24 MILS, w/I.D. EPOXY 1.7 MILS	362 LF	GIE		01/04/2016		GIE		03/14/2016				
						3R	3R ELBOW, HIGH STRENGTH WROUGHT BUTT-WELDED FITTING, 36" O.D.	2 EA											
						GPW	GEOTEXTILE PIPE WEIGHT, 9000 LBS	12 EA											

Document Path: H:\GIS\1657\Deliverables\Alignment\Sheet\1657-PL-DG-70197-100.mxd