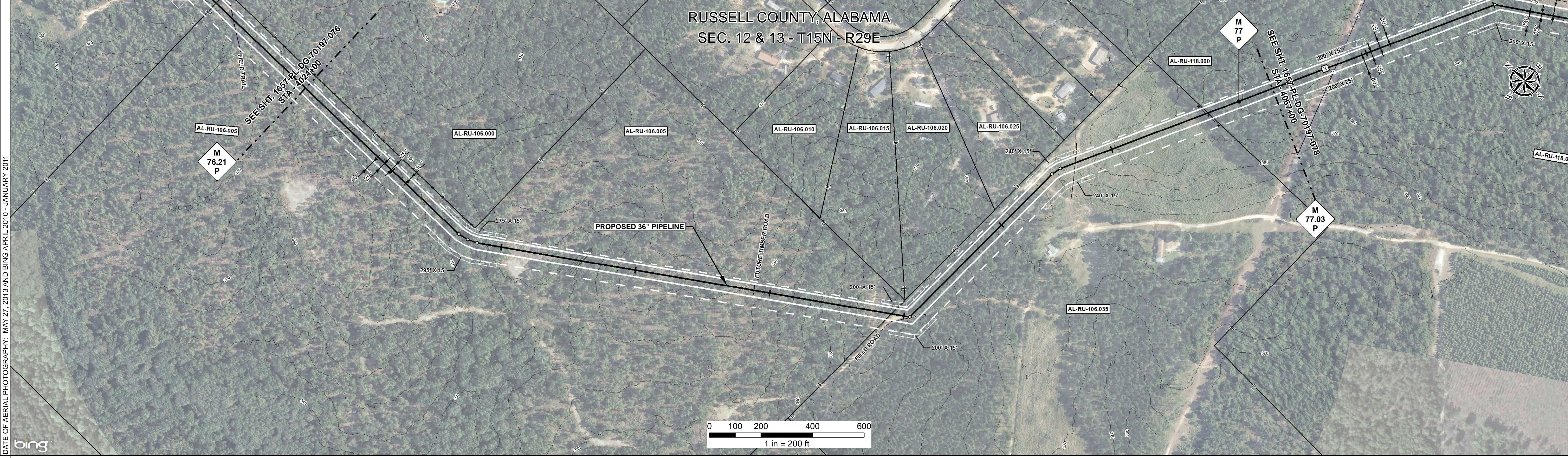


RIGHT - OF - WAY									
TRACT NUMBERS									
RODDAGE	4024+00								4067+00
SURVEY DATA	SURVEY COMPANY: FIELD BOOK: PAGES:								
CLASS LOCATION	CLASS 1				CLASS 2				
MINIMUM DEPTH OF COVER	3'	5'	3'	5'	3'	5'	3'	5'	17'00"
PIPE MATERIAL	3R, FITTING SET ON WEIGHT, GPW, GEOTEXTILE PIPE WEIGHT								

**ALIGNMENT DETAIL**

- PROPOSED PIPELINE
- PROPOSED PERMANENT EASEMENT
- TEMP WORKSPACE
- ADD. TEMP. WORKSPACE
- EASEMENT LINE
- CL STREAM/CREEK/DITCH
- EDGE OF WATER
- CL LEVEE
- FIELD DELINEATED WETLAND
- STREAM/DRAIN/WATERBODY BNDRY
- CL ROAD
- EDGE OF ROAD/PAVEMENT/CURB
- CL CULVERT
- CL RAILROAD
- ACCESS ROAD (PAR/TAR)
- STRUCTURE
- CONTOUR MAJOR (EVERY 10')
- PIPELINE MILEPOST
- PIPELINE MILEPOST 10TH
- PROPERTY LINE
- UNDERGROUND WATERLINE
- UNDERGROUND COM. CABLE
- UNDERGROUND POWERLINE
- UNDERGROUND SANITARY SEWER
- OVERHEAD POWERLINE
- OVERHEAD TELEPHONE
- VERIFIED PIPELINE
- FENCE
- TOP / TOE

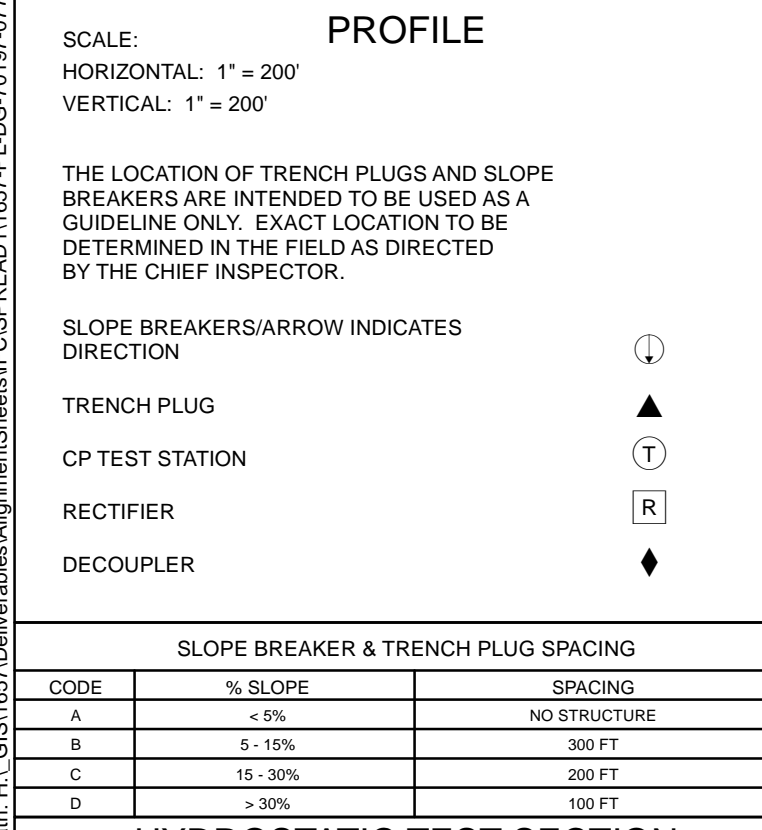
DATE OF AERIAL PHOTOGRAPHY: MAY 27, 2013 AND BING APRIL 2010 - JANUARY 2011



**REFERENCE DRAWING**

**ENVIRONMENTAL SURVEY DATA**

**SENSITIVE AREAS**



**HYDROSTATIC TEST SECTION**

CODE	% SLOPE	SPACING
A	< 5%	NO STRUCTURE
B	5 - 15%	300 FT
C	15 - 30%	200 FT
D	> 30%	100 FT

REV	DRN	DATE	DESCRIPTION	ITEM NO.	DESCRIPTION	QTY
0		06/29/2015	ISSUED FOR BID	1	36" O.D. x 0.520" W.T., API 5L X70, FBE 16 MILS w/I.D. EPOXY 1.7 MILS	2366 LF
1		03/14/2016	ISSUED FOR CONSTRUCTION	2	36" O.D. x 0.625" W.T., API 5L X70, FBE 16 MILS w/I.D. EPOXY 1.7 MILS	1934 LF
				3R	3R ELBOW, HIGH STRENGTH WROUGHT BUTT-WELDED FITTING, 36" O.D.	1 EA

REFERENCE DRAWINGS		REVISIONS		MATERIALS		ENGINEERING APPROVALS						
DWG. NO.	DESCRIPTION	REV	DRN	DATE	DESCRIPTION	ITEM NO.	DESCRIPTION	QTY				
		0		06/29/2015	ISSUED FOR BID	1	36" O.D. x 0.520" W.T., API 5L X70, FBE 16 MILS w/I.D. EPOXY 1.7 MILS	2366 LF				
		1		03/14/2016	ISSUED FOR CONSTRUCTION	2	36" O.D. x 0.625" W.T., API 5L X70, FBE 16 MILS w/I.D. EPOXY 1.7 MILS	1934 LF				
						3R	3R ELBOW, HIGH STRENGTH WROUGHT BUTT-WELDED FITTING, 36" O.D.	1 EA				
										<b>ENGINEERING APPROVALS</b> TITLE: _____ SIGNATURE: _____ DATE: _____ CONSTRUCTION: _____ DATE: _____		
										<b>SABAL TRAIL PROJECT</b> <b>PROPOSED 36" PIPELINE</b> <b>STA. 4024+00 TO STA. 4067+00</b> <b>ALIGNMENT SHEET</b>		
										<b>LOC.</b> RUSSELL COUNTY, ALABAMA		
										<b>YEAR:</b> 2017 <b>SHEET:</b> 77 OF 492 <b>SCALE:</b> 1" = 200' <b>DWG.</b> 1657-PL-DG-70197-077 <b>REV.</b> 1		

Document Path: H:\GIS\1657\Deliverables\Alignment\Sheets\1657-PL-DG-70197-077.mxd

