

RIGHT - OF - WAY	CROSSING	AL-LE-050.000	AL-LE-055.005	AL-LE-056.000	AL-LE-057.000	AL-LE-059.000	AL-LE-060.000	AL-LE-061.005.WC	AL-LE-061.000	AL-LE-062.000	AL-LE-062.010.SR	AL-LE-063.000	AL-LE-064.000
TRACT NUMBERS		2912+00	2914+22	2918+20	2924+77	2924+47	2924+47	2924+45	2930+42	2931+30	2941+84	2947+40	2954+00
RODDAGE		13.5	24.1	27.7	10.3	3.2	3.3	31.9	2.9	63.9	33.7	6.7	23.2
SURVEY DATA		SURVEY COMPANY: FIELD BOOK: PAGES:											
CLASS LOCATION		CLASS 1											
MINIMUM DEPTH OF COVER		5'											
PIPE MATERIAL		1864' ① 70' ④ 1605' ① 133' ④ 451' ① 51' ③ 613' ① 103' ⑤ 410' ①											
		2912+00 2930+46 2931+34 2947+38 2949+72 2954+22 2955+74 2959+47 2960+00 2965+00											

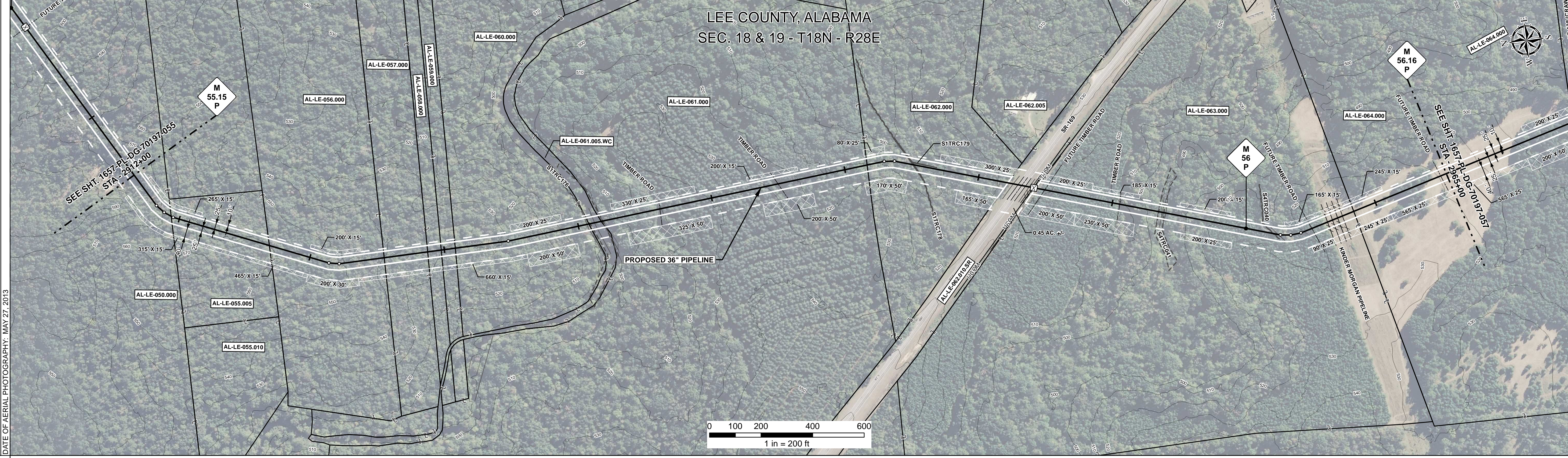
**ALIGNMENT DETAIL**

PROPOSED PIPELINE  
 PROPOSED PERMANENT EASEMENT  
 TEMP WORKSPACE  
 ADD. TEMP. WORKSPACE  
 EASEMENT LINE  
 CL STREAM/CREEK/DITCH  
 EDGE OF WATER  
 CL LEVEE  
 FIELD DELINEATED WETLAND  
 STREAM/DRAIN/WATERBODY BNDRY  
 CL ROAD  
 EDGE OF ROAD/PAVEMENT/CURB  
 CL CULVERT  
 CL RAILROAD  
 ACCESS ROAD (PAR/TAR)  
 STRUCTURE  
 CONTOUR MAJOR (EVERY 10')  
 PIPELINE MILEPOST  
 PIPELINE MILEPOST 10TH  
 PROPERTY LINE  
 UNDERGROUND WATERLINE  
 UNDERGROUND COM. CABLE  
 UNDERGROUND POWERLINE  
 UNDERGROUND SANITARY SEWER  
 OVERHEAD POWERLINE  
 OVERHEAD TELEPHONE  
 VERIFIED PIPELINE  
 FENCE  
 TOP / TOE

TRANS. TOWER  
 GUY ANCHOR  
 HDD ENTRY/EXIT  
 FIRE HYDRANT  
 UTILITY POLE  
 AERIAL MARKER  
 ELEC. WATER, SAN. SEWER, GAS  
 TELE. & STORM DRAIN MANHOLES

WELL  
 SEPTIC  
 VALVE  
 METER  
 SPREAD BREAK

DATE OF AERIAL PHOTOGRAPHY: MAY 27, 2013



REFERENCE DRAWING	AL-LE-062.010.SR	1657-PL-DG-28181
ENVIRONMENTAL SURVEY DATA	S1TRC176 2920+86 2931+04 2931+37	S1TRC178 2943+67
	S4TRC041 2953+35 2953+50 2953+56	S4TRC040 2957+88

SENSITIVE AREAS	16, 18
-----------------	--------

**PROFILE**

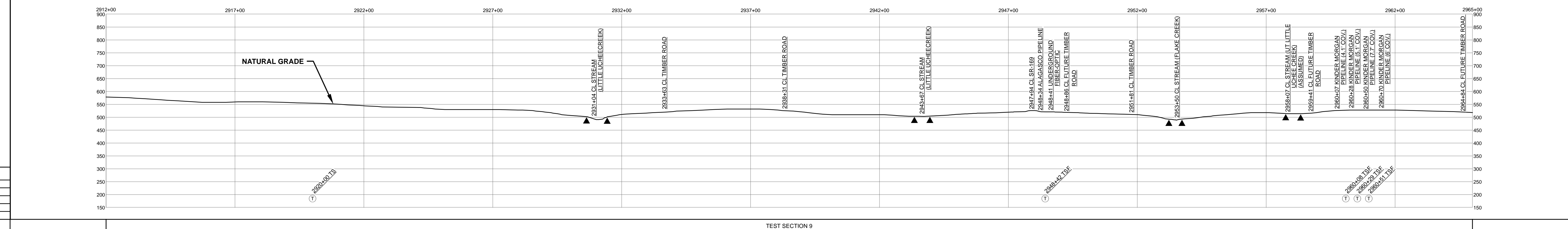
SCALE:  
 HORIZONTAL: 1" = 200'  
 VERTICAL: 1" = 200'

THE LOCATION OF TRENCH PLUGS AND SLOPE BREAKERS ARE INTENDED TO BE USED AS A GUIDELINE ONLY. EXACT LOCATION TO BE DETERMINED IN THE FIELD AS DIRECTED BY THE CHIEF INSPECTOR.

SLOPE BREAKERS/ARROW INDICATES DIRECTION

TRENCH PLUG  
 CP TEST STATION  
 RECTIFIER  
 DECOUPLER

SLOPE BREAKER & TRENCH PLUG SPACING		
CODE	% SLOPE	SPACING
A	< 5%	NO STRUCTURE
B	5 - 15%	300 FT
C	15 - 30%	200 FT
D	> 30%	100 FT



<b>HYDROSTATIC TEST SECTION</b>		<b>REVISIONS</b>		<b>MATERIALS</b>		<b>ENGINEERING APPROVALS</b>		<b>SABAL TRAIL PROJECT</b>		<b>TEST SECTION 9</b>								
DWG. NO.	DESCRIPTION	REV	DRN	DATE	DESCRIPTION	ITEM NO.	DESCRIPTION	QTY	TITLE	SIGNATURE	DATE	SIGNATURE	DATE	YEAR	SHEET	SCALE	DWG.	REV.
		0		06/29/2015	ISSUED FOR BID	1	36" O.D. x 0.520" W.T., API 5L X70, FBE 16 MILS w/I.D. EPOXY 1.7 MILS	4943 LF	CONSTRUCTION					2017	56 OF 492	1" = 200'	1657-PL-DG-70197-056	1
		1		03/14/2016	ISSUED FOR CONSTRUCTION	3	36" O.D. x 0.750" W.T., API 5L X70, FBE 16 MILS w/I.D. EPOXY 1.7 MILS	51 LF										
						4	36" O.D. x 0.750" W.T., API 5L X70, FBE 16 MILS, ARO 24 MILS, w/I.D. EPOXY 1.7 MILS	203 LF										
						5	36" O.D. x 0.520" W.T., API 5L X70, FBE 16 MILS, ARO 24 MILS, w/I.D. EPOXY 1.7 MILS	103 LF										

